

# The Micrometer



The cab of BR 9F 92220 'Evening Star' at the National Railway Museum

AUCKLAND SOCIETY OF MODEL ENGINEERS INC. | Issue 714 | August 2025

## Contacts

### **Mailing Address:**

PO Box 14570, Panmure, Auckland 1741, New Zealand

**Club House:** Peterson Reserve, Mt Wellington, Auckland 1060

**Tel:** 09 570 5286

<b>President</b>	Philip Dowdeswell	021 296 5196
	<b>E-mail Address:</b>	president@asme.org.nz
<b>Secretary</b>	Dave Housley	09 576 3923
	<b>E-Mail Address:</b>	info@asme.org.nz
<b>Editor</b>	Philip Dowdeswell	021 296 5196
	<b>E-mail Address:</b>	editor@asme.org.nz
<b>Boiler Inspector</b>	Mike Banks	021 139 4554

## Inside this issue

Presidents Report - August 2025  
Clubs Monthly Calendar  
Train Roster  
Club Notices  
Notice of Special General Meeting  
Workshop Night  
Roger Stratton's Laithe for Sale  
Bits & Pieces

# Presidents Report

Hello everyone

Remember, the exhibition for this year is fast approaching! It'll be on the 18th and 19th of October this year. If you have an exhibit you'd like to show off, please send the details to [info@asme.org.nz](mailto:info@asme.org.nz) so that we can make sure that everything is organised well in advance.

We've managed to get through the winter weather unscathed, so I hope everyone has managed to stay wrapped up warm against the storms that came through over the past month. The next month should hopefully be a bit easier for everyone.

At the next general meeting, we'll be having a preliminary discussion about the rule changes for the to-be-announced special general meeting. We have some working concepts that we are keen to show everyone.

Thanks

Philip Dowdeswell

ASME President

## *This Month's Calendar*

Tuesday, August 5th	07:30pm	General Meeting (Clubhouse)
Tuesday, August 12th	07:30pm	Workshop Night
Tuesday, August 19th	07:30pm	Committee Meeting (Clubhouse)

# TRAIN ROSTER



Date	Electric Driver	Electric Driver	Steam Driver	Train Controller	Station / Guard	Station / Guard	
3-Aug-25	I Ashley	T Gil-Goldsbrough	Voluntary	<u>P Dowdeswell</u>	R Souter*	L Brown	
10-Aug-25	D Housley	R Shearer	Voluntary	<u>T Lawrence</u>	R Crook*	S Heath	
17-Aug-25	M Moore	R Copeland	Voluntary	<u>S Meikle</u>	M Luxton*	B Leung	T McDonald
24-Aug-25	R Reichardt	T Gil-Goldsbrough	Voluntary	<u>G Wills</u>	P Dowdeswell*	B Maroc	
31-Aug-25	C Whitiskie	S Watson	Voluntary	<u>B Aickin</u>	P Dowdeswell*	D Housley	
7-Sept-25	I Ashley	M Vickers	Voluntary	<u>P Dowdeswell</u>	R Souter*	T Schaw	M Schaw
14-Sept-25	D Housley	R Shearer	Voluntary	<u>T Lawrence</u>	R Crook*	L Brown	D Booker
21-Sept-25	M Moore	R Copeland	Voluntary	<u>S Meikle</u>	M Luxton*	B Leung	S Heath
28-Sept-25	R Reichardt	C Whitiskie	Voluntary	<u>S Watson</u>	P Dowdeswell*	T Gil-Goldsbrough	B Maroc

## Please Note:

If for some reason you are unable to attend on your rostered date, you are respectfully reminded that it is your responsibility to find a replacement member to fill the gap – please don't let the rest of the team for the day be left short-handed.

Note: The Train Controllers for both affected days must be informed of the swap in advance. It is the responsibility of the person who initiated the swap to do this. Also advise Bob Aickin who is keeping track of the number of duties each of us perform during the year.

# CLUB NOTICES

## ***Model Engineering Journals***

ASME has an extensive range of Model Engineering Journals (ME and MEW) in the library, managed by Mark Luxton. The collection goes back to the first editions. However as new copies arrive binding takes a while, so the latest may not be available for a while.

If you would like to read the latest edition, they are free to borrow electronically from Auckland Public Libraries. The easiest way to borrow them is using the LIBBY app. If you are a member of the Auckland Library System (anywhere in the SuperCity), this gives free access to an ME and MEW e-sub. If you encounter difficulties take your device (an iPad is ideal) into any Auckland Library Branch.

Please let the editor know if you have been using this service successfully, or have encountered any difficulties.

## ***Myford ML7 Lathe for sale***

Longstanding ASME member David Black is moving to a retirement village in September and is closing his workshop in Waiuku. A number of items will be available and preference will be given to ASME members. Included is a beautiful and complete late model Myford ML7 Lathe with a lot of accessories. There is also an older Myford Super Seven on a stand and ready for restoration. There is also a Taiwanese Mill Drill RF30, genuine Rong Fu. For anybody who wants to get in early, please contact David directly on 021482345

## **ASME Exhibition + End of Year Luncheon**

We have tentatively booked the next exhibition for the 18th and 19th October and the End-of-Year Luncheon and awards ceremony for the 1st of November. More details will follow in the coming months. ASME will be hosting its annual exhibition on the 18th and 19th of October at the ASME Clubroom.

Thank you to everyone who gave us great feedback about last year's exhibition. We've elected to have the end of year luncheon and awards ceremony on the 1st of November.

If you would like to submit an exhibit, please send the details to [info@asme.org.nz](mailto:info@asme.org.nz). Please also include a photo of the exhibit, as well as dimension details and any other support required (Such as needing power or an air compressor) so we can ensure there is space for everyone.

If you would like to attend the luncheon, please let us know at [info@asme.org.nz](mailto:info@asme.org.nz). We anticipate that the price for this should be the same as last year, but we are waiting for some final confirmation from the venue so we will post that in the next Micrometer if we have it.

# SPECIAL GENERAL MEETING

To all members of the Auckland Society of Model Engineers

This is a notice to inform you that a Special General Meeting will be occurring on **2<sup>nd</sup> September 2025** at the ASME Clubrooms at 7:30pm.

New rules to be motioned in, taking effect September 2025 on approval of the membership:

- In 2022, The New Zealand Government signed into law the Incorporated Societies Act 2022, which takes effect on April 2026. ASME must update its rules regarding disputes/hearings to fit within the new guidelines and a change to the rules requires us to hold a special meeting to ratify them into action.

If you would like to read about the law changes, you can do so here:

<https://is-register.companiesoffice.govt.nz/help-centre/getting-started/new-legislation-for-incorporated-societies/>  
<https://www.legislation.govt.nz/act/public/2022/0012/latest/LMS100809.html>

- In discussion with committee and society members, it has been decided to amend the rule regarding the maximum presidential term, removing the three consecutive term limit *so long as* they are ratified at an AGM with a 75% vote and are running unopposed.
- At the request of Mike Jack, members may submit written votes for notified motions in AGM's and SGM's. They may also proxy their vote to another member by email or letter to the secretary.

# Bits & Pieces

## July Workshop Recap

Our July workshop was a great success, with a strong turnout and plenty of engaging discussion. The evening featured a mix of “bits and pieces” presentations and a live demonstration of our newly repaired milling machine.

- **Roger Shearer** showcased a recently acquired boring head—an intriguing and unusual vintage piece.
- **Murray Hollis** brought along a compact XY table, ideal for mounting on a drill press. Although it’s been in his possession for years, Murray is now planning to refurbish it for active use in his workshop.
- **Mike Jack** presented components from a prototype 3½” locomotive kit. His role is to identify potential issues before the kit goes into production. The parts included pre-drilled plates and stainless steel 3D-printed elements, sparking a lively discussion on the merits (and drawbacks) of metal 3D printing versus traditional casting.

The group then moved downstairs for a hands-on demonstration of the big green mill, led by **Dave Housley**. To the relief of both Dave and Steve, the machine performed flawlessly cutting through a steel block with a 10mm endmill effortlessly. A 3-axis DRO will be installed soon, but the mill is now ready for club use. We recommend trammng the machine before operation.



Rogers vintage boring head in box



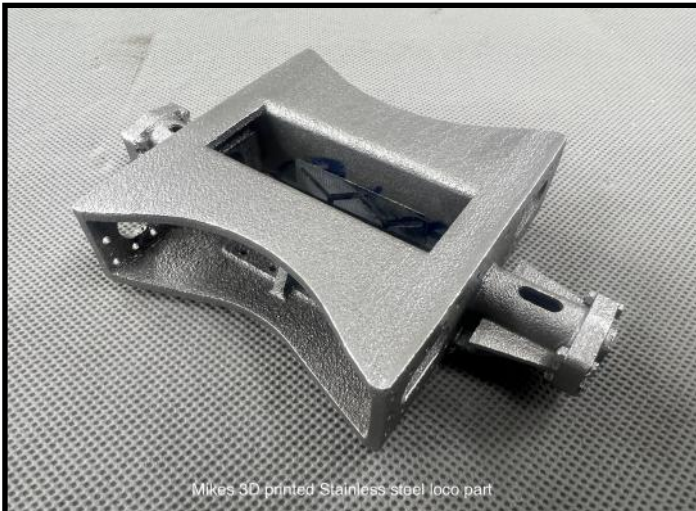
Rogers Boring head

# Bits & Pieces

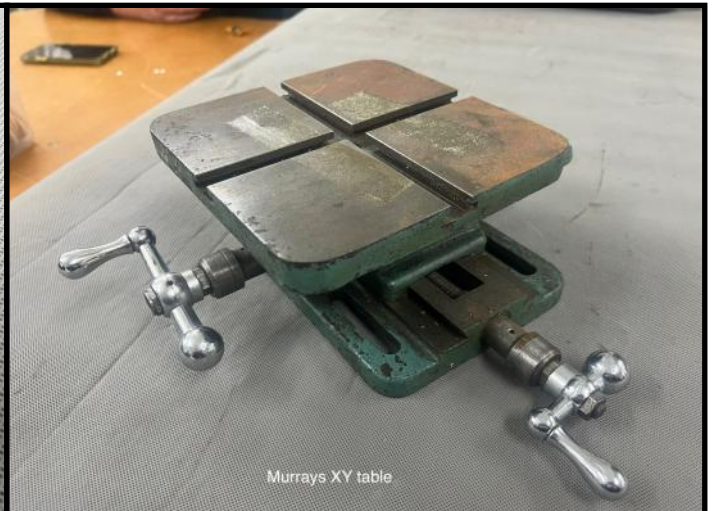
## August Workshop Preview

Next month's workshop will focus on **CAD (Computer-Aided Design)**, featuring a demonstration and discussion using **Alibre software** on the club's large upstairs screen.

We hope this session will spark interest in CAD among members. **Mike Jack** has kindly offered to run offsite classes for those keen to learn more. Attendance at this workshop will help gauge interest and determine whether offering these classes is worthwhile. If you cannot make the workshop night and still interested in the classes, please contact Dave Housley or Steve Watson.



Mikes 3D printed Stainless steel loco part



Murrays XY table



Mikes predrilled bogey plate with axel box

# Roger Stratton's Laithe & Mill for sale

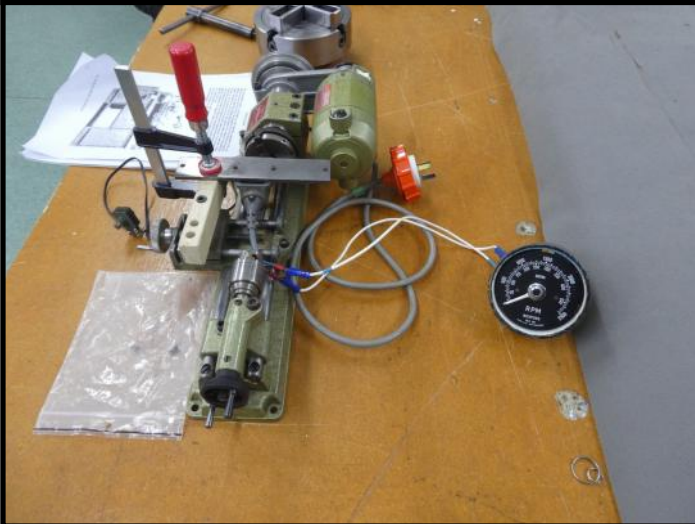
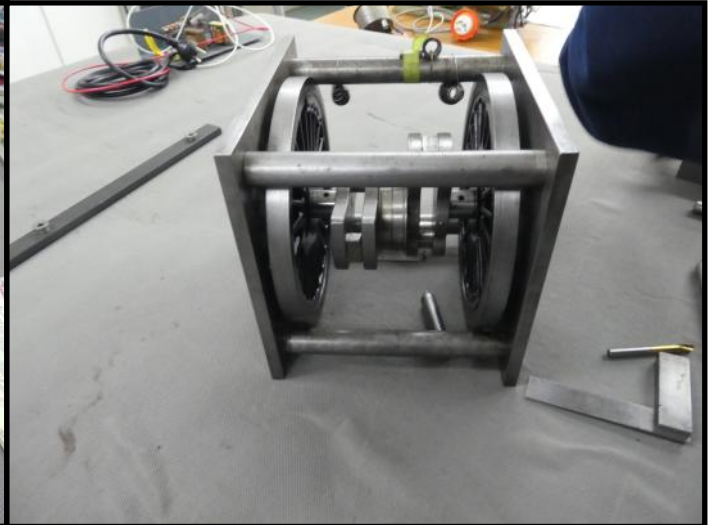
Roger Stratton is putting his Laithe and Mill up for sale. If you are interested in purchasing either or both items, please send send your request to [info@asme.org.nz](mailto:info@asme.org.nz) and we can send you Roger's contact information.



## Bits & Pieces



Mike banks showed off a large amount of tooling he had to make to get his quartering right for his beejax and his GWR king right from a hand operated shaper to his quartering fixture also displayed were setting rods to enable him to set his axle distances when first making his frames.

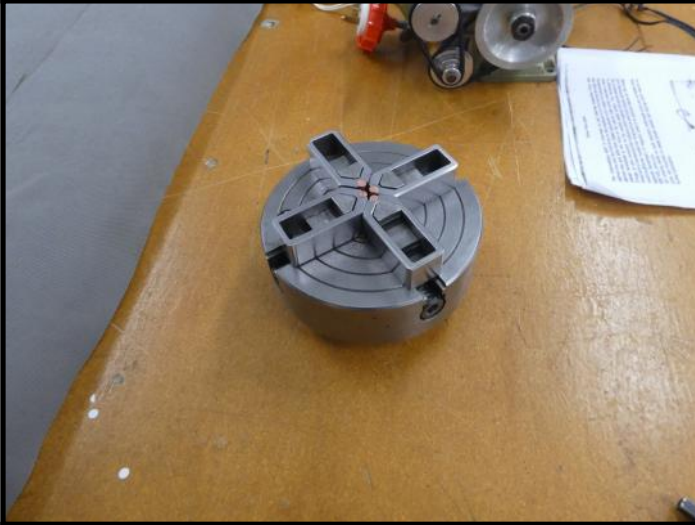


Murray Hollis brought in Ron Copelands tachometer for his lathe . Murray is trying to fix it for Ron but with the complexity inside it and no manual to refer to it is slow going. However Murray is persevering with it and making headway . You can see that he has matched it up to his small bench top lathe to effect a working situation but now comes the acid test when they install it back on Ron's lathe

## Bits & Pieces



Mike Jack displayed working fire box doors for a Merchant Navy Class loco for a customer overseas the detail is beyond belief . He originally received the 3D models but had a lot of modifying to do to arrive at workable solution . Cast by lost wax process they are remarkably fine in detail



Steve Watson showed us the soft jaws he had made for his four jaw chuck and is making another set for his three jaw chuck. He is now becoming an accomplished machinist and is venturing into the trials of metal finishing which really shows up on these soft jaws



Grant Anderson took a look at our club's EC and decided that the old girl needed a spruce up starting with the springs and step he has stripped them and repainted for fitting back on at our Saturday working bee