

The MICROMETER

AUCKLAND SOCIETY OF MODEL ENGINEERS INCORPORATED

PO Box 14570, Panmure, Auckland 1072, NEW ZEALAND

Club House: Peterson Reserve, off Peterson Road, Mt Wellington,
Auckland 1060

Number 689

Telephone: 09 570 5196 Club Web Site: www.asme.org.nz

May 2023

President	Philip Dowdeswell	021 296 5196
	e-mail address	president@asme.org.nz
Secretary	Dave Housley	09 576 3923
	e-mail address	info@asme.org.nz
Editor	David Black	021 482 345
	e-mail address	editor@asme.org.nz

REGISTERED NEW ZEALAND PUBLICATION



Points construction in progress...

President's Report May 2023

Hello everyone

I hope that April has been kind to everyone. While I was hoping that we could have had our steam training on Sunday, it was unfortunately delayed due to a burst water pipe that prevented any steaming. We expect that this will be remedied in a very short amount of time, so it should not impact the next Sunday's running.

If you are keen on attending the next steam training, please send me an email and I will add you to the list. Once we have another day scheduled, I will let you know!

We are however, steaming ahead with plans for the installation of two sets of points onto the line! I am excited to share plans on this with the club at our next general meeting and to receive feedback on implementations. We currently have two sets of points almost ready for implementation and hopefully a third set not too far away.

I am sad to report that Timothy Robinson has taken a step back from the committee. Tim has been a dedicated member of ASME since he joined the club in May 1998, and served on the committee since the AGM of 2000 - a long career spanning twenty two years! Tim is a well respected member of ASME so we look forward to his continuing presence at Club activities.

The lathe has been received and installed in the workshop, ready to go once the 3phase cable has been wired in place. I look forward to seeing what people are able to create on it!

Thanks

Philip Dowdeswell

ASME President



Members should keep a lookout on the website too, www.meanz.org.nz. It is a good place to find other clubs.

THIS MONTH'S CALENDAR

Tuesday, May 2nd 7.30 pm	- General Meeting, (Clubhouse)
Tuesday, May 9th 7.30 pm	- Workshop Night, (Clubhouse)
Tuesday, May 16th 7.30 pm	-Committee Meeting, (Zoom)



Train Roster

ASME		DUTY ROSTER				
Date	Electric Driver	Electric Driver	Steam Driver	Train Controller	Station / Guard	Station / Guard
7-May-23	I Ashley	B Matchett	Voluntary	<u>P Dowdeswell</u>	R Crook*	C Whitiskie
14-May-23	D Housley	R Shearer	Voluntary	<u>T Lawrence</u>	M Luxton*	H Dando
21-May-23	J Lankow	M Vickers	Voluntary	<u>S Meikle</u>	K Ryan*	R Mascarehas
28-May-23	M Moore	M Plant	Voluntary	<u>D Russell</u>	R Souter*	A van Zon
4-Jun-23	R Reichardt	I Ashley	Voluntary	<u>G Wills</u>	D Wilson*	L Brown
11-Jun-23	A Bailey	D Housley	Voluntary	<u>B Aickin</u>	R Crook*	R Copeland
18-Jun-23	J Lankow	M Moore	Voluntary	<u>P Dowdeswell</u>	M Luxton*	H Dando
25-Jun-23	B Matchett	R Shearer	Voluntary	<u>T Lawrence</u>	K Ryan*	R Mascarehas
2-Jul-23	M Vickers	C Whitisie	Voluntary	<u>S Meikle</u>	R Souter*	A van Zon

Please Note:

If for some reason you are unable to attend on your rostered date, you are respectfully reminded that it is your responsibility to find a replacement member to fill the gap – please don't let the rest of the team for the day be left short-handed. Note: the Train Controllers for both affected days must be informed of the swap in advance. It is the responsibility of the person who initiated the swap to do this. Also advise Bob Aickin who is keeping track of the number of duties each of us perform during the year.

The details of the swap should be noted in the Run Book. Also, please ensure the member you arrange a swap with is one who is rostered to undertake the same role to ensure we always have members with the appropriate training and experience on the day.

Workshop Night

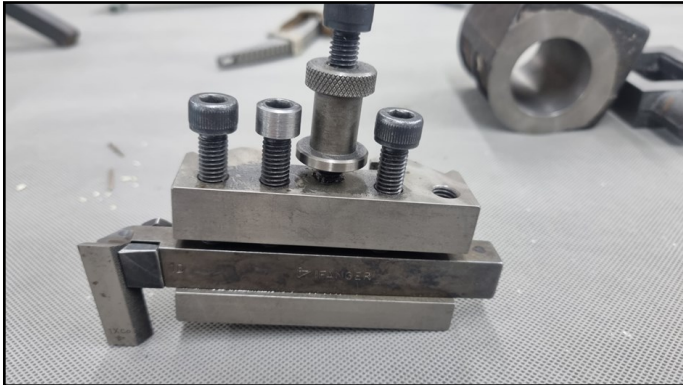


Mike Jack brought in examples of laser cut spring steel plate which when separated from the waste sheet and bent on the bending jig he made and assembled together form the spring assemblies for his locos that he is building. The cut in the steel made by the laser beam is 0.2mm.

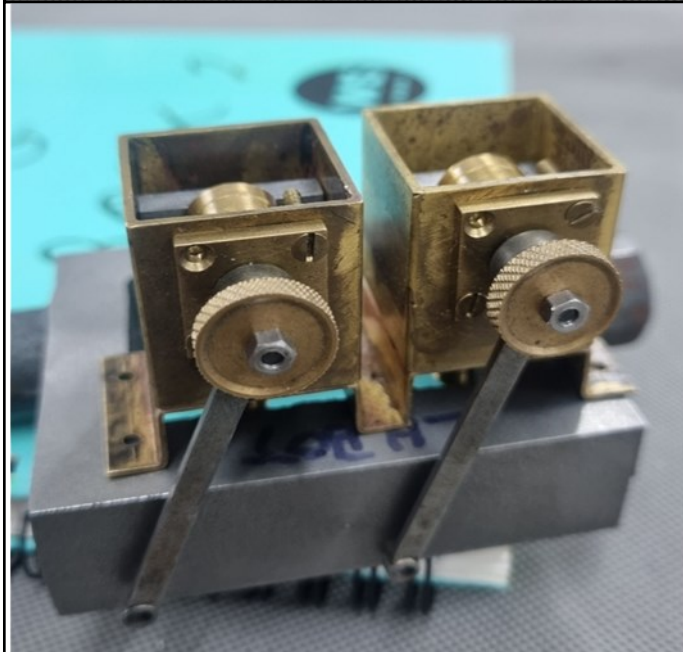
Another example from Mike Jack was a component that had been machined in his CNC which when combined with the next photograph went into the spring assembly shown before.



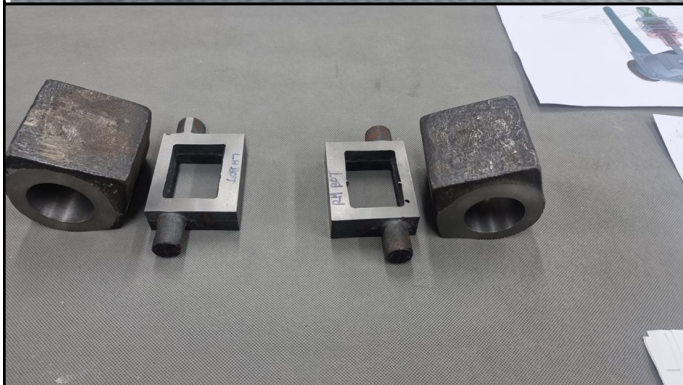
Workshop Night



Mike also brought in an example of the Ifhanger system of tools where the HSS insert is designed to be tangential cutting. A very versatile system



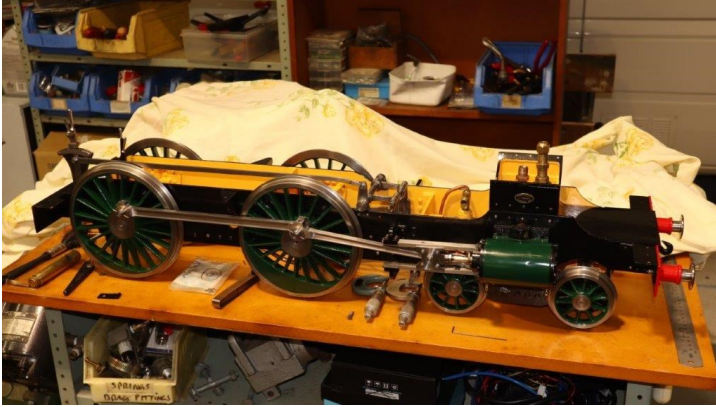
Martin Plant displayed a duplex type oiling system whereby both actuating arms move together one spindle slips whilst the other grips say when moving to the right and on the return stroke the opposite spindle grip and visa versa the other spindle slips by the means of tiny sprag clutches.



Dave Housley presented the steam chests and cylinders for his beejax in first op state and persevering the machining on his Myford Super 7

Bits and Pieces—4th April 2023

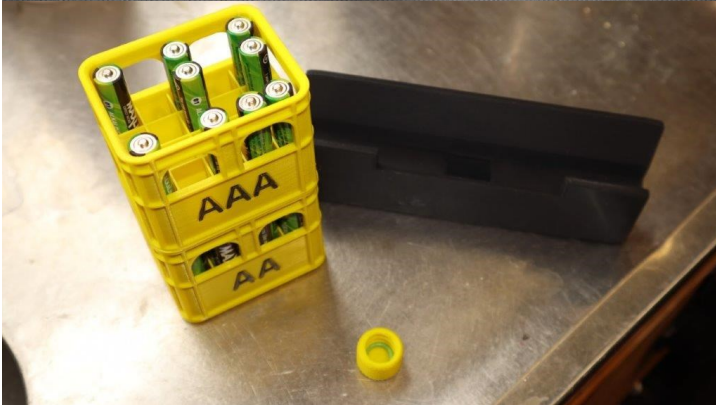
Conducted by Mike Banks, report and photos by Dave Russell



The first item tonight was a bit of a work in progress in the form of the Maid of Kent 5" locomotive "Dover", currently under rebuild by Dave Russell. The engine was built by Peter Swager and completed in 1982. The locomotive performed well at the club track and was a regular hard working engine till being taken to the workshop for many repairs and replacement of worn bushes, re-bushed axle boxes, machining of the wheel treads and a complete clean and re-paint. It's finally coming back together now that I have retired and have time to focus on this project.



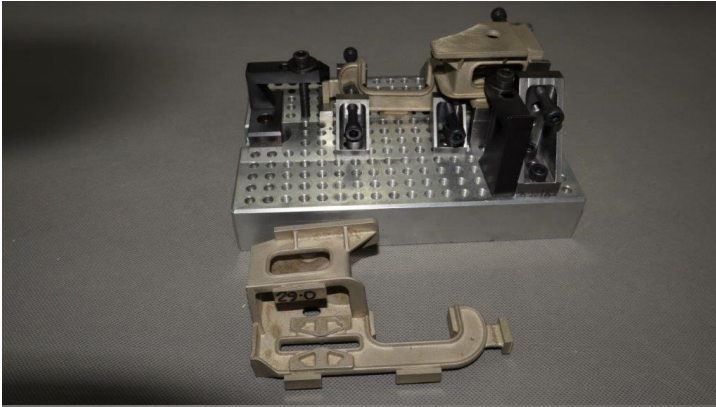
This nut cracker was purchased from the club auction of Fred Veller's workshop on behalf of his daughter. Mike Moore cleaned it up and had to rebuild the wheel as one of the spokes was missing. Unfortunately Macadamia nuts were just a bit too hard and Mike gave up on trying to crack it before the wheel broke. An unusual feature was the twin start thread.



I brought in a small selection of 3D printed plastic items made on my low cost 3D printer. Some battery storage crates, a stand for my Tablet so that it can charge while watching and a threaded drain cap to replace a broken one on the Camper toilet.



This fine Minuette Chiming Mantle Clock belongs to Greville Wills and has just come back from repair as it needed some new bearings and good clean.



Mike Jack has made this very handy fixture plate and attachments to enable the easier and accurate holding of castings to be machined for his BR class 3 locomotive project. The castings shown are made from white bronze and the patterns for them are printed in wax on a specialised 3D printer.



This cutting jig has been by Mike Jack to enable the easy shortening of small rivets. The tool can cut 12 rivets at a time as the holes are slightly staggered. The whole is made from A2 steel.



As Mike Jack is very productive we continued with some more of his parts production, this time spring bolts made from Allen headed machine screws, this saves a whole lot of time as the threads are already cut.



The bolts can be seen in place on this spring, to obtain the correct spring rate on this scale spring Mike has made the leaves hollow (machined away) where they cant be seen by the next leaf in the stack.