

Number 684

November 2022

The MICROMETER

AUCKLAND SOCIETY OF MODEL ENGINEERS INCORPORATED

PO Box 14570, Panmure, Auckland 1072, NEW ZEALAND

Club House: Peterson Reserve, off Peterson Road, Mt Wellington, Auckland 1060

Telephone: 09 570 5286 Club Web Site: www.asme.org.nz

President	Mike Moore	09 443 6050
	e-mail address	president@asme.org.nz
Secretary	Dave Housley	09 576 3923
	e-mail address	info@asme.org.nz
Editor	David Black	021 482 345
	e-mail address	editor@asme.org.nz

REGISTERED NEW ZEALAND PUBLICATION



John Lankow at the controls of the Ec on Sunday 23rd October

Photo—David Black

NOTICE OF AGM ON FOLLOWING PAGE

**Notice of Annual General Meeting
of
Auckland Society of Model Engineers Incorporated
The Committee gives notice
that the next Annual General Meeting
will be held at
The ASME Clubrooms, Peterson Reserve, Panmure
on
Tuesday 6th December 2022 commencing at 7.35pm.
The Agenda items will be the relevant items as set out in Rule 16,
as per the attached document**

**Members' attention is also drawn to the forms for
Nomination of President
and
Members for the Committee
attached to this newsletter**

President's Report, October 2022

Welcome to what should be my penultimate report for the year, and for my tenure as president. Looking back over the last 3 years [has it really been that long?] the club and the whole world has been through a tumultuous time, but hopefully the worst is behind us. What better way then to celebrate our new freedoms than to get together with good food and company at the ASME Xmas luncheon on the 19th November at the Waipuna Motor Lodge. We have had a good response to date but there are still a few places left at \$20.00 a head, so get in quick.

We have just received our new Permit To Operate from the Auckland Council, and all members should make themselves familiar with the recently reviewed and updated Health and Safety and Hazards Report which is now in force (see ASME website <https://asme.org.nz/members/>) The Operations Report is currently being reviewed and will be implemented in due course.

The returns from Sunday Running are continuing their strong showing and should maintain that with the improving weather. The recent club auction was very enjoyable with a good turnout from members, and special thanks to auctioneer Mike Jevremovic. The workshop nights have a loyal following and it is hoped this will increase as the evenings get longer and warmer.

We have recently received notification from Fresh Concepts regarding the intention to hold the annual Basin Festival on the 26th February 2023 so we will keep you informed of developments as they come to hand. This is always a big day for us, financially and logistically, so plenty of assistance is always appreciated by those rostered on on the day.

With the AGM next month please give serious thought to filling the club positions and helping make the club what you want it to be. With several of the current committee members having served for a considerable period of time and wanting to step back a bit, it would be good to have more members come on board to help out.

Until then, good modelling and best wishes.

Cheers,

Mike Moore.

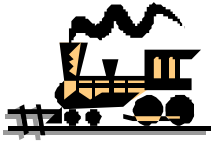
ASME is an active member of MEANZ

Members should keep a lookout on the website too, www.meanz.org.nz. It is a good place to find other clubs.

When you are travelling, just like us, our friends nationwide always welcome visitors.

NOVEMBER & AGM CALENDAR

- | | |
|--|---|
| <u>Tuesday November 1st, 7.30 pm</u> | - General Meeting (Clubhouse) |
| <u>Tuesday November 8th, 7.30 pm</u> | - Workshop Night, (Clubhouse) |
| <u>Tuesday November 15th, 7.30 pm</u> | - Committee Meeting, (TBA) |
| <u>Saturday November 19th, midday</u> | - Annual Luncheon (Wellington's Restaurant) |
| <u>Tuesday December 6th, 7.30 pm</u> | - Annual General Meeting, (Clubhouse) |



Train Roster

ASME NOV-DEC 2022 DUTY ROSTER						
Date	Electric Driver	Electric Driver	Steam Driver	Train Controller	Station / Guard	Station / Guard
6-Nov-22	I Ashley	M Hollis	Voluntary	<u>P Dowdeswell</u>	D Beecher*	C Whitiskie
13-Nov-22	D Housley	J Lankow	Voluntary	<u>T Lawrence</u>	R Crook*	D Wilson
20-Nov-22	M Moore	R Reichardt	Voluntary	<u>S Meikle</u>	M Luxton*	M Vickers
27-Nov-22	B Matchett	R Shearer	Voluntary	<u>T Robinson</u>	R Souter*	A Van Zon
4-Dec-22	A Bailey	B Matchett	Voluntary	<u>D Russell</u>	D Beecher*	C Whitiskie
11-Dec-22	M Plant	I Ashley	Voluntary	<u>G Wills</u>	D Wilson*	M Vickers
18-Dec-22	M Hollis	D Housley	Voluntary	<u>B Aickin</u>	M Luxton*	R Shearer
25-Dec-22	-----	Xmas / New Year Break - No Roster in Operation				-----
1-Jan-23	-----	Xmas / New Year Break - No Roster in Operation				-----

Bold and Underlined Name = **Train Controller**, i.e. the person in overall control of all operations for the day

Bold with Asterisk* Name = **Stationmaster**, i.e. the person responsible for activities in the station area and for the day's takings.

The COVID traffic light system was discontinued as from 1159pm on 12/09/2022.

At the time of writing there were 16,399 cases and 41 deaths in the previous week.

So it's not over yet. Keep Safe, you know what to do!

Notwithstanding the Government's changes, ASME is continuing to operate with some additional measures to help protect our members from the virus. Public running is continuing with some conditions.

Please Note:

If for some reason you are unable to attend on your rostered date, you are respectfully reminded that it is **your** responsibility to find a replacement member to fill the gap – please don't let the rest of the team for the day be left short-handed. **Note: the Train Controllers for both affected days must be informed of the swap in advance. It is the responsibility of the person who initiated the swap to do this.** Also advise Bob Aickin who is keeping track of the number of duties each of us perform during the year.

The details of the swap should be noted in the Run Book.

Also, please ensure the member you arrange a swap with is one who is rostered to undertake the same role to ensure we always have members with the appropriate training and experience on the day.

Club Notices

The **AGM** is now only a month away. Notice and agenda attached
Time to decide about nominations for the President and committee. Form attached.

Annual Auction

The ASME Annual Auction was held at the October General Meeting in the clubrooms on Tuesday October 4th.

Annual Luncheon at the Waipuna Hotel

The committee has booked the 19th of November for a buffet luncheon at Wellington's restaurant at the Waipuna Hotel, this is a Saturday meeting luncheon is set for 12:30 so arrival about 12:00 in the lounge bar would seem ideal for a mix and mingle. The cost, which is being subsidised by ASME, has been set at \$20.00 per person (members and partners) and payment to the ASME bank account below would confirm your placing;

02-0223-0078104-000

Please include luncheon in the particulars field, and your name in the reference field. Would members please pay early so the committee can give the restaurant accurate numbers of attendees.

At the last general meeting an enthusiastic show of hands for attending was given for this event. Time now to turn this into bookings. The cutoff date for bookings is Monday 14th November.

Future of ASME

Our railway continues to be extremely popular, but our membership is dwindling. Most members are retired and many of us at least entering the departure lounge.

Comparison with other similar groups with more young members reveals an important point of difference. ASME has no presence in social media.

What do members think about us starting a Facebook page? Is there anyone among us with the skills to establish it? This will be raised at the AGM, and should be actively discussed over the next couple of months.

Visitor Video from Pierre Trollip

<https://youtu.be/fM71cL9tfg0>

Workshop night August (Repeated as Photos missed in last Micrometer)

August's workshop night was well attended with eight members attending and one visitor who was Justin Parker from Manukau Live steamers who has taken over MBM engineering supplies from his father Bill who passed away. The members present were Mike Banks, Les Brown, Roger Shearer, Tim Robinson, Mike Jack, Martin Plant, Murray Hollis and myself Dave Housley.

First up was Justin, he showed off a Bunyip cylinder casting he has brought in from overseas. The bunyip is a 7 1/4" sugar cane locomotive and quite a heavy model. He also displayed a radius rod machined to 2nd op stage and a return crank.

Next was Mike Banks with newly assembled crank for his main driving wheels to his King. He is greatly impressed with the use of Loctite for making this assembly more simple and if made to the direction of the Loctite "good book" is as strong as that of press fit, if not greater. He has been working on the prototype points for the track and had to manufacture various fittings and brackets for the actuation and gave us a brief run down on the project

Tim Robinson brought in a photo of an armature he is currently working on a gave us a brief rundown of what was entailed

Mike Jack brought in a cylinder to a British Rail style cast in white bronze, this will have cast iron liners put in it and Mike explained that one must be mindful as the thermal coefficient of these two metals differ choice of shrink fit must be worked out carefully to ensure the liners don't move in service.

Martin Plant did not present any material exhibits but had brought in prints of the 3D models for his frames for his Brittania tender. He had modelled these up (from drawings he had bought) to check the assembly for errors before having any laser cutting done which proved a worthwhile exercise as there were a few. There were photos also of the investment patterns he had 3D printed in PLA of the style of cylinder which Mike Jack had brought in.

Murray Hollis showed a tap he had made from a screw for tapping 92 TPI 00 gauge hole in a printed circuit board. He brought in his chassis for his garden gauge railway engine to enquire the best way to secure the cranks. The general consensus was to use taper pins.

As for myself I had one of my Beejax wheels that I shrunk the tyres on at the weekend. Club night brought up a mention of toolmakers buttons so I made a set from 20mm dia silver steel to demonstrate how to use them.

The answer to the what is from last month was the instrument is a Planar Gauge, which was set by slips and DTI to a given height and in turn set your tool height on mill or planning machine. Much the same function as the tool presetters you can now buy.

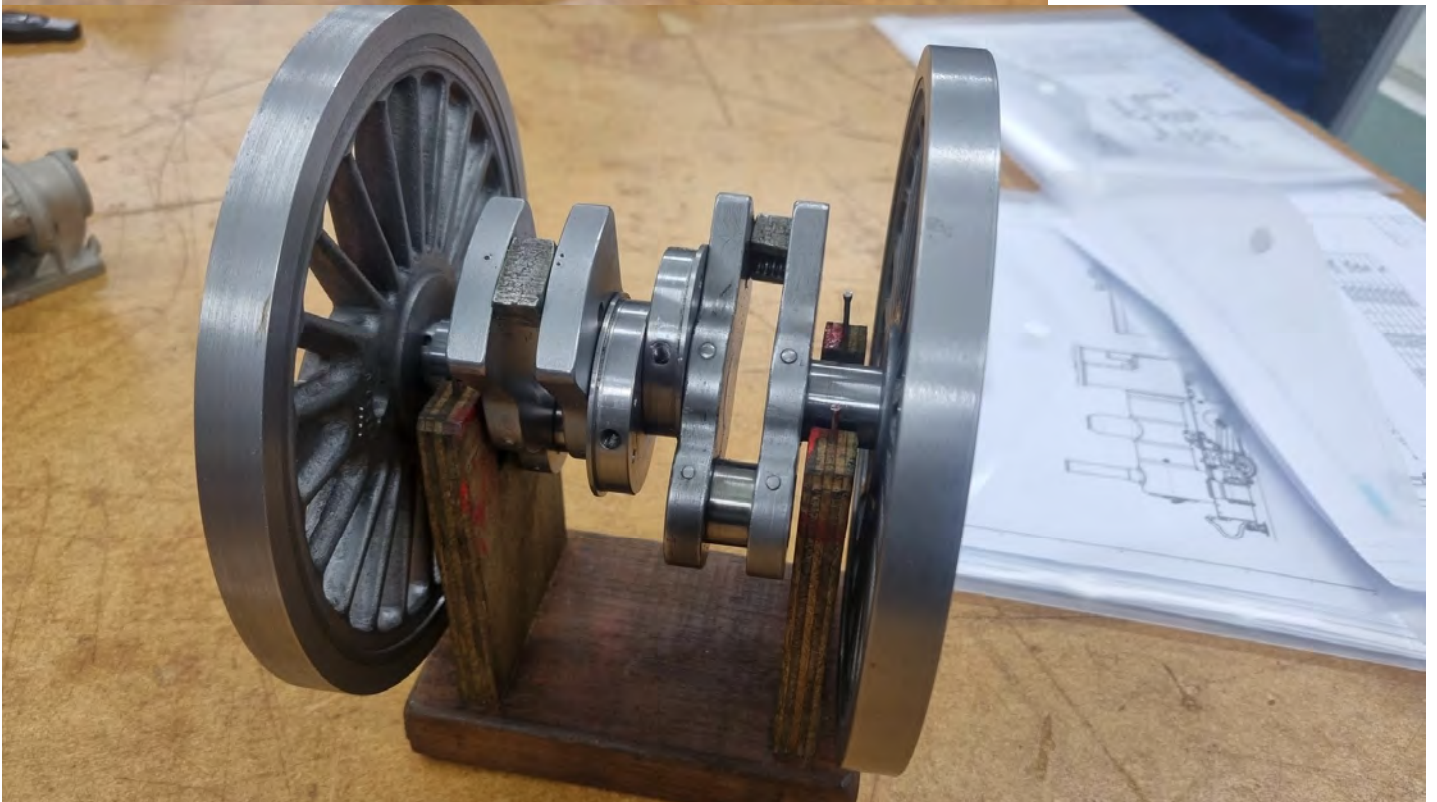
Dave Housley

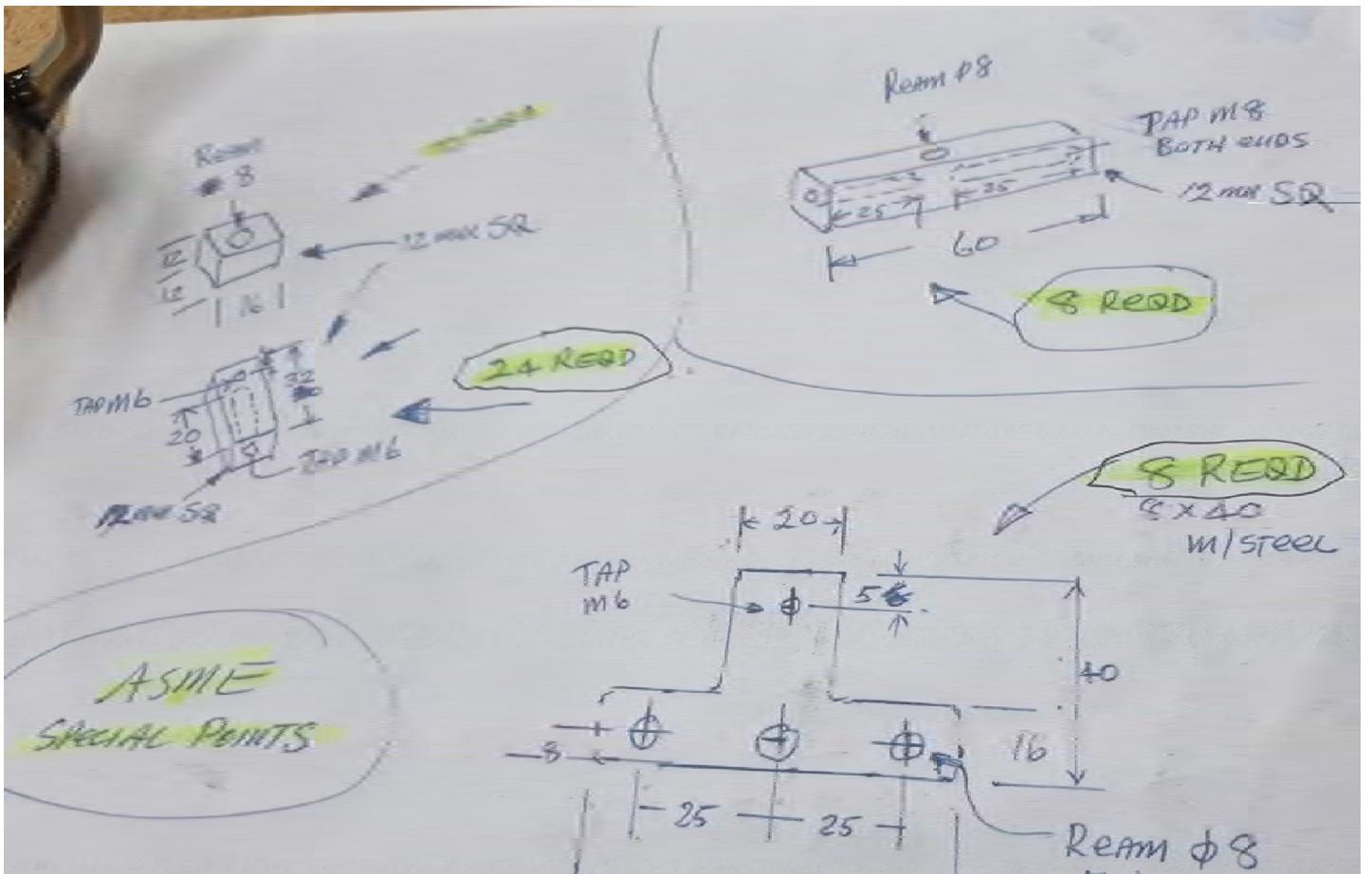


Left:
Justin
Parker's
Cylinder

Below:

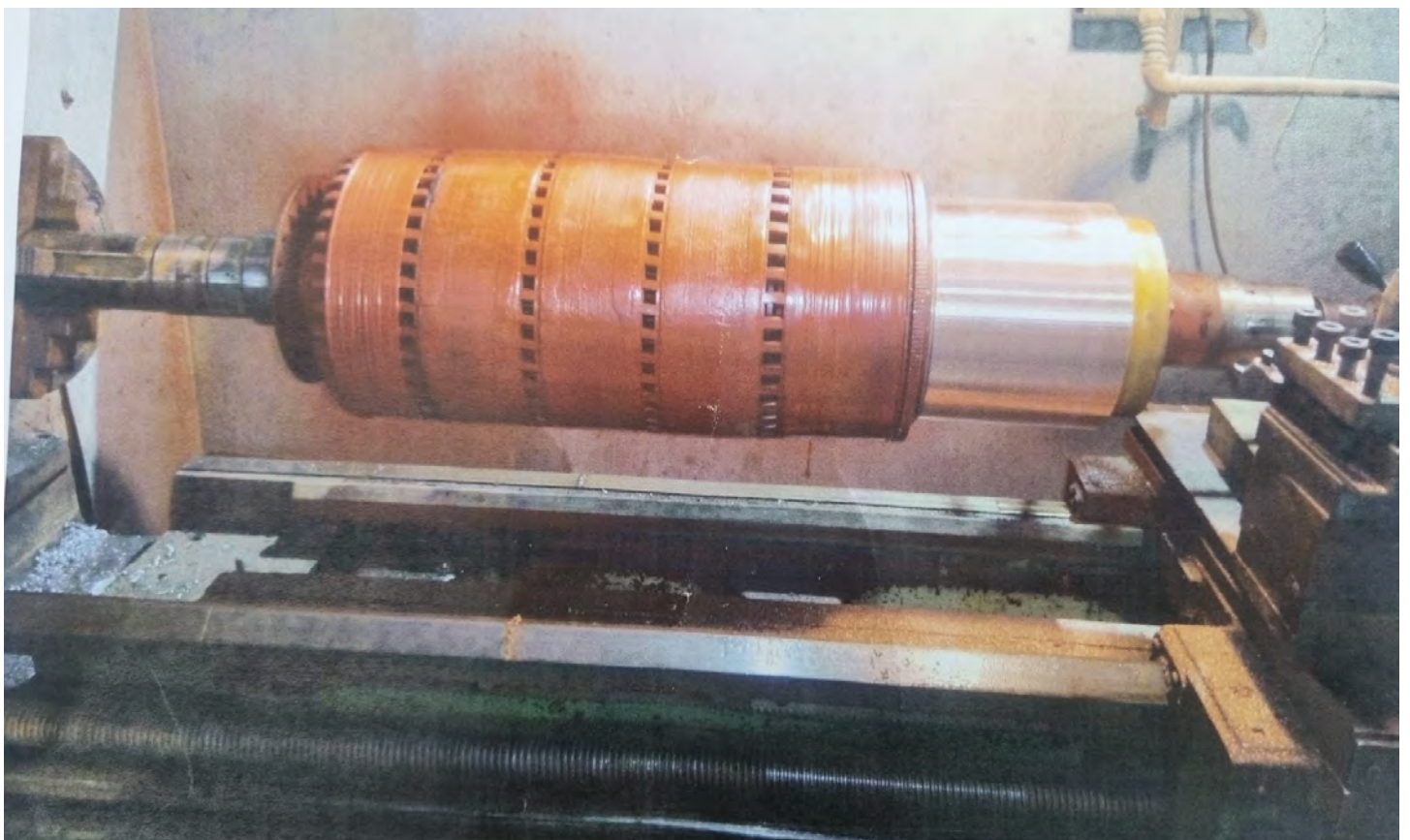
Mike
Bank's
Crank





Above: Mike Bank's Sketch

Below: Tim Robinson's Armature



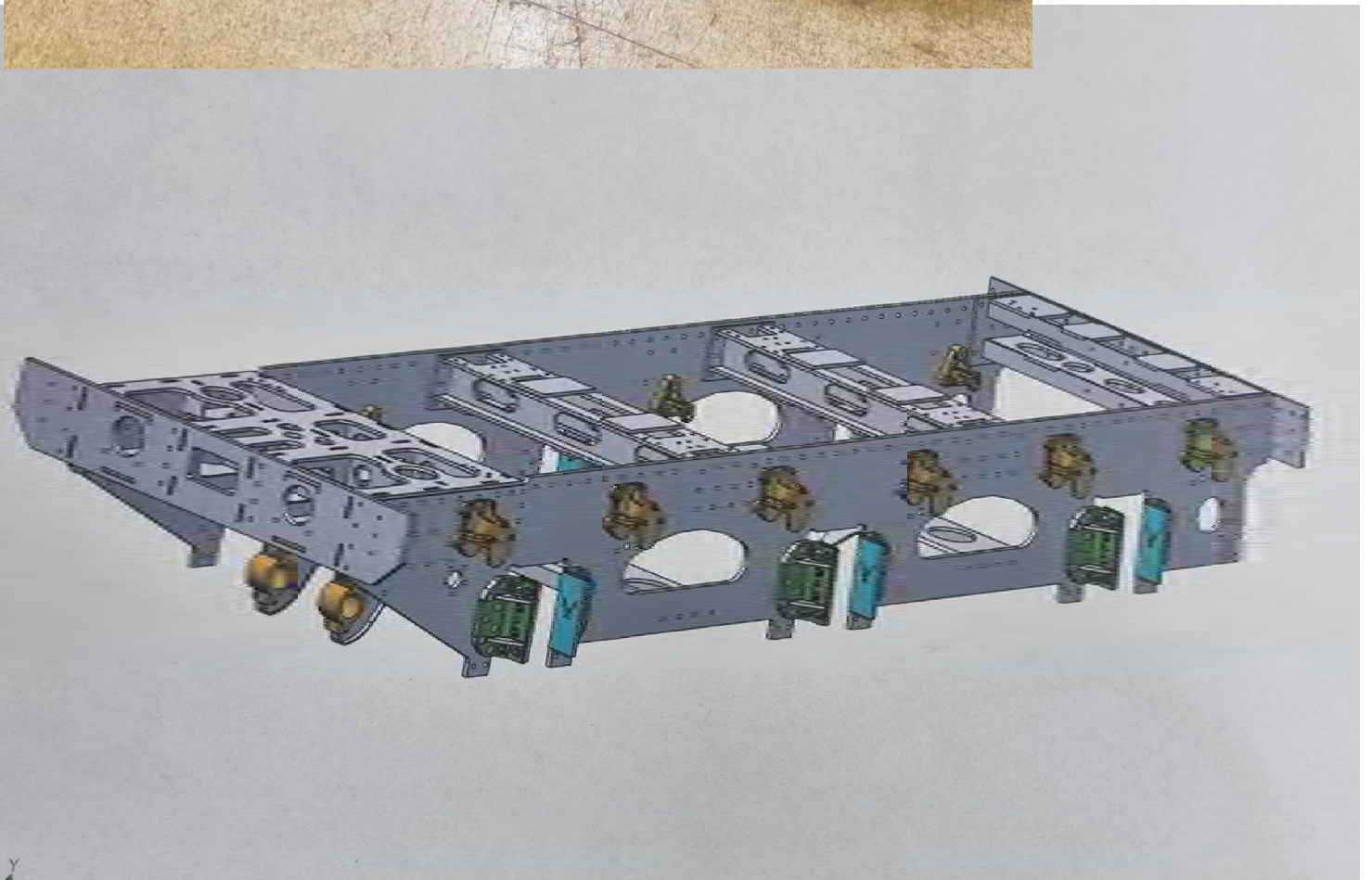


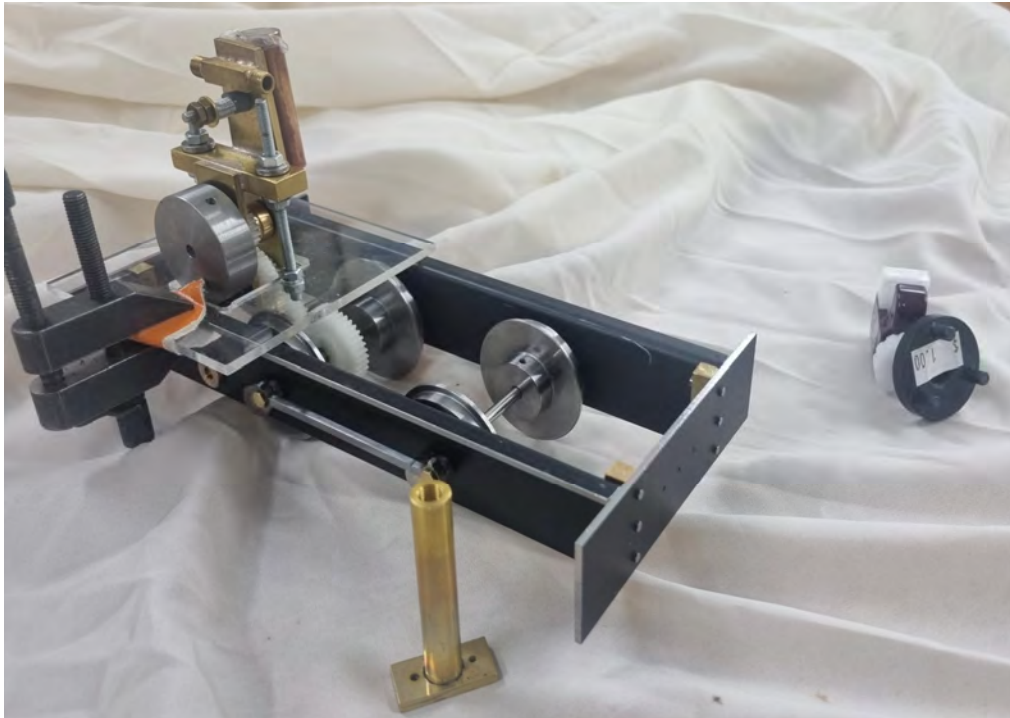
Left:

Mike Jack's Cylinder

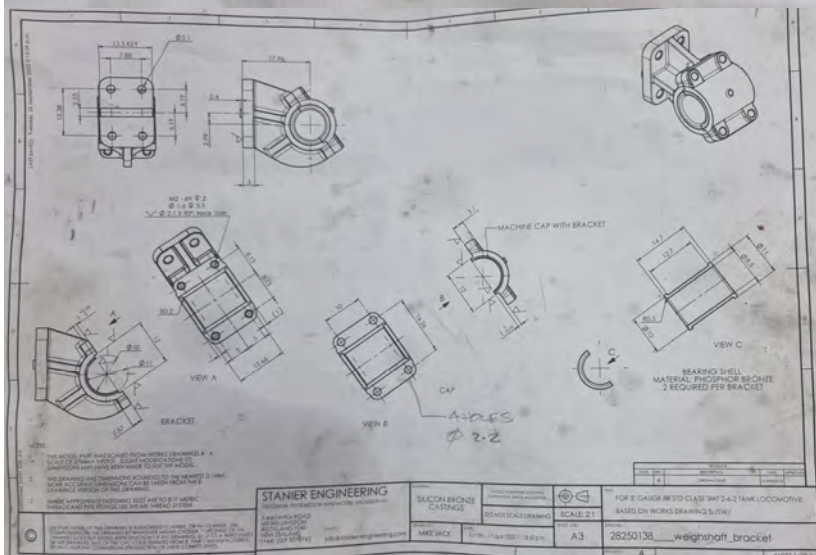
Below:

Martin Plant's Chassis





Murray Hollis brought his garden gauge loco showing further progress now it is close to final fit with the steam engine and hopefully will see it running on air on the display table soon, He also presented an object that looks as though it will fit an angle grinder but had three spigots protruding from it face no body could put a use for it Can you ? it cost a princely sum of one dollar.



The drawing above shows the attention to detail Mike Jack has to go to by producing ex works drawings into solid model then producing detailed working drawings before programming can be achieved.

Mike has to handle not only producing the drawings but jigs and fixtures have to be manufactured by Mike to aid the production of his components before he can do any machining on his cnc.

All the best **Dave Housley**

Overleaf—a couple of Model Engineering Classics

—a highly esteemed visitor to ASME one Sunday afternoon in August (Life Member Alan Pritchard)

— the reborn Myford Super Seven, still made in England, and now shipping again (about \$10,000 NZ landed)

