

Number 682

September
2022

The MICROMETER

AUCKLAND SOCIETY OF MODEL ENGINEERS INCORPORATED

PO Box 14570, Panmure, Auckland 1072, NEW ZEALAND

Club House: Peterson Reserve, off Peterson Road, Mt Wellington, Auckland 1060

Telephone: 09 570 5286 Club Web Site: www.asme.org.nz

President	Mike Moore	09 443 6050
	e-mail address	president@asme.org.nz
Secretary	Dave Housley	09 576 3923
	e-mail address	info@asme.org.nz
Editor	David Black	09 235 2372
	e-mail address	editor@asme.org.nz

REGISTERED NEW ZEALAND PUBLICATION



Steam Returns to ASME

Photo Grant Anderson

President's Report, September 2022

Welcome to another winter edition of the Micrometer although the temperatures lately make that difficult to believe. The usual winter maladies are with us again though but I hope they are not causing any serious issues for you or your families. The returns from Sunday Running would indicate that people are happy to be out and taking part in activities and with fine weather this should be set to continue.

Further work has been carried out on the Engine Shed maintenance, and Tony Lawrence and Aaron were employed for a week to upgrade the retaining wall between the boat pond and the SMM building, which was then back-filled by members at a Working Bee. Timothy is still carrying out work on the mill and will shift it onto site when complete.

A big thank you and congratulations to Grant Anderson and those who assisted him in ensuring the club and track passed the MEANZ audit- we now wait for Worksafe and AC to issue the new Licence to Operate.

In the meantime the committee have agreed on an excellent option for our end-of year function - a return to Waipuna Hotel which re-opens this month.

With talk of warmer weather and Xmas this would be a good time to remind you all that the AGM is not that far away, which means the election of officers and committee members. Just a reminder that as this is my third term a new president will be required, and we would always welcome more members on the committee to help spread the load, so please give some thought to making yourselves available.

For those on the Sunday Running roster, with the days being busy and only 5 rostered on at a time, any no-shows place a lot of pressure on the other members of the team, so please check when you are on, and remember it is your responsibility to find a replacement if you are unable to attend.

All the best and good modelling,

Cheers,

Mike Moore.

ASME is an active member of MEANZ, members should keep a lookout on the website too www.meanz.org.nz, is a good place to find other clubs when you are travelling. However, the website is not necessarily up to date and is soon to be updated. Just like us, our friends nationwide always welcome visitors.

SEPTEMBER CALENDAR

Tuesday September 6th, 7.30 pm
Tuesday September 13th, 7.30 pm
Tuesday September 20th, 7.30 pm

- General Meeting (Clubhouse)
- Workshop Night, (Clubhouse)
- Committee Meeting, (Zoom)



Train Roster

4-Sep-22	I Ashley	M Plant	Voluntary	<u>P Dowdeswell</u>	T Robinson*	D Beecher
11-Sep-22	A Bailey	B Matchett	Voluntary	<u>D Black</u>	R Crook*	L Brown
18-Sep-22	M Hollis	K Ryan	Voluntary	<u>T Lawrence</u>	M Luxton*	M Vickers
25-Sep-22	D Housley	J Lankow	Voluntary	<u>S Meikle</u>	R Shearer*	C Whitiskie
2-Oct-22	M Moore	R Reichardt	Voluntary	<u>D Russell</u>	D Wilson*	D Beecher
9-Oct-22	I Ashley	A Bailey	Voluntary	<u>G Wills</u>	R Crook*	B Cooper
16-Oct-22	M Hollis	D Housley	Voluntary	<u>B Aickin</u>	M Luxton*	M Vickers
23-Oct-22	J Lankow	B Matchett	Voluntary	<u>D Black</u>	R Souter*	A Van Zon
30-Oct-22	M Plant	R Reichardt	Voluntary	<u>M Moore</u>	K Ryan*	R Shearer

Bold and Underlined Name = **Train Controller**, i.e. the person in overall control of all operations for the day

Bold with Asterisk* Name = **Stationmaster**, i.e. the person responsible for activities in the station area and for the day's takings.

At the date of publishing New Zealand is at COVID Orange Traffic Light
Public running is resumed with some conditions

Please Note:

If for some reason you are unable to attend on your rostered date, you are respectfully reminded that it is **your** responsibility to find a replacement member to fill the gap – please don't let the rest of the team for the day be left short-handed. **Note: the Train Controllers for both affected days must be informed of the swap in advance. It is the responsibility of the person who initiated the swap to do this.** Also advise Bob Aickin who is keeping track of the number of duties each of us perform during the year.

The details of the swap should be noted in the Run Book.

Also, please ensure the member you arrange a swap with is one who is rostered to undertake the same role to ensure we always have members with the appropriate training and experience on the day.

Club Notices

The AGM is now only 3 months away.

Time to start thinking about nominations for the President and committee.

Annual End of Year ASME Function

This year ASME has arranged;

The Wellington Room at the Waipuna Hotel,

1230 Saturday 19th November

Please keep this date free—it is confirmed

Death of a Great Model Engineer

News has reached the Micrometer of the death of Stan Bray.

Stan died after a short illness at his home on the 18th of June. He was 97.

He will be missed by his family and many throughout the hobby, especially by his friends in the Peterborough Society of Model Engineers.

Stan was a regular contributor to Model Engineer (and Model Boats). Many, probably most of his books, are in the ASME library. He was the man who came up with the idea for *Model Engineers' Workshop* magazine and was its first editor. His original expectation was that MEW would be a few specials, but it took off, and remains popular. He was an active hobbyist and model engineer right up to the end.

Rest in peace, Stan.

Bits and Pieces with Dave Russell



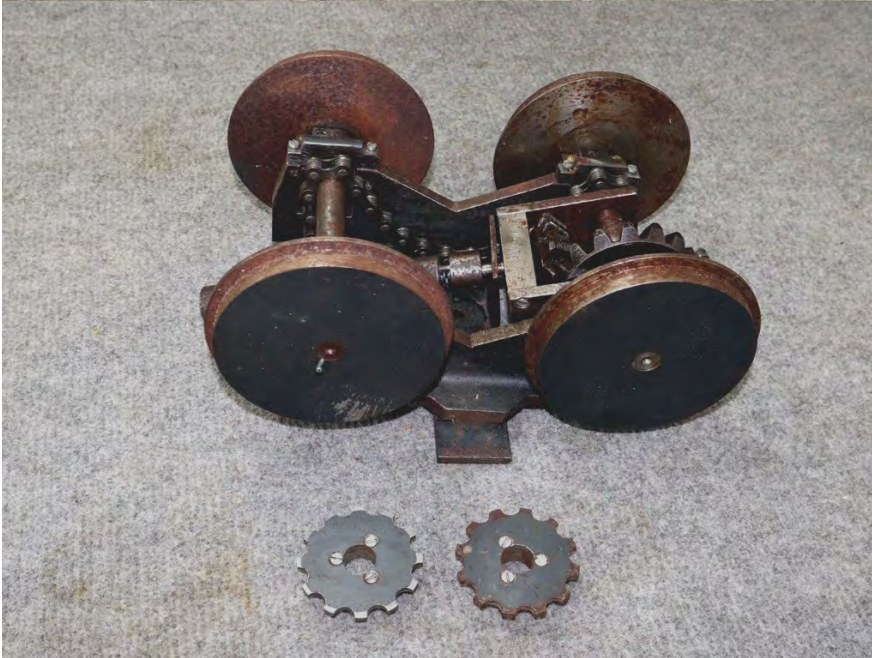
Dave Housley is making more progress on his 0-6-0 version of a Beejax 5" loco, here are two of the wheels the one on the left is to have a tyre shrunk onto it as are the others. The jigs and 3mm broach are so that Dave can cut keyway slots in the wheels before fitting to the axles.



This platework has been laser cut and cnc folded for Martin Plant's next locomotive the "Britannia" in 5" gauge, the holes are all for 1/32 rivets. Martin has collected a large kit of parts for this locomotive but is just finishing off his B1 before he starts on this one.



Ron Copeland has this old Wisconsin engine, its a 12hp, 4 stroke. The motor had a broken Camshaft, Ron has joined it back together by boring the two halves and inserting a large pin longitudinally, the two halves have then been pinned to through the shaft (shown in yellow circles). Ron is thinking of changing the motor from magneto ignition to points and is hoping that someone can re-profile the end lobe on the cam to the correct profile for points.



Murray Hollis brought in a couple of items this month, first off was a saw he had picked up and was not sure of its purpose, the conclusion was that it was from a mitre saw of some sort. Murrays other item was his gauge 1 model under construction of a Camden Steam Tram. Murray has had some problems with binding in the coupling rods, but after much perseverance has overcome this and it now runs nicely.

This small bogie is being built by Bob Aitken, the loco this is based on a Heisler design and will be very agile on a tight radius track. The chain drive gears have been made by Bob and the engine will be driven by a 1/2 horse wheelchair motor.



Lastly tonight we had a very nice superheater made by Les Brown, made from stainless tube, tig welded at the hot end. Les is planning on joining to the headers with silver solder paste. The superheaters are for a 5" Rebuilt Royal Scott loco.

Workshop Night with Dave Housley



First of all, what is it? When I served my time this was the last item you made for your tool box. This item was bought of Trade me for \$20 by Roger Shearer

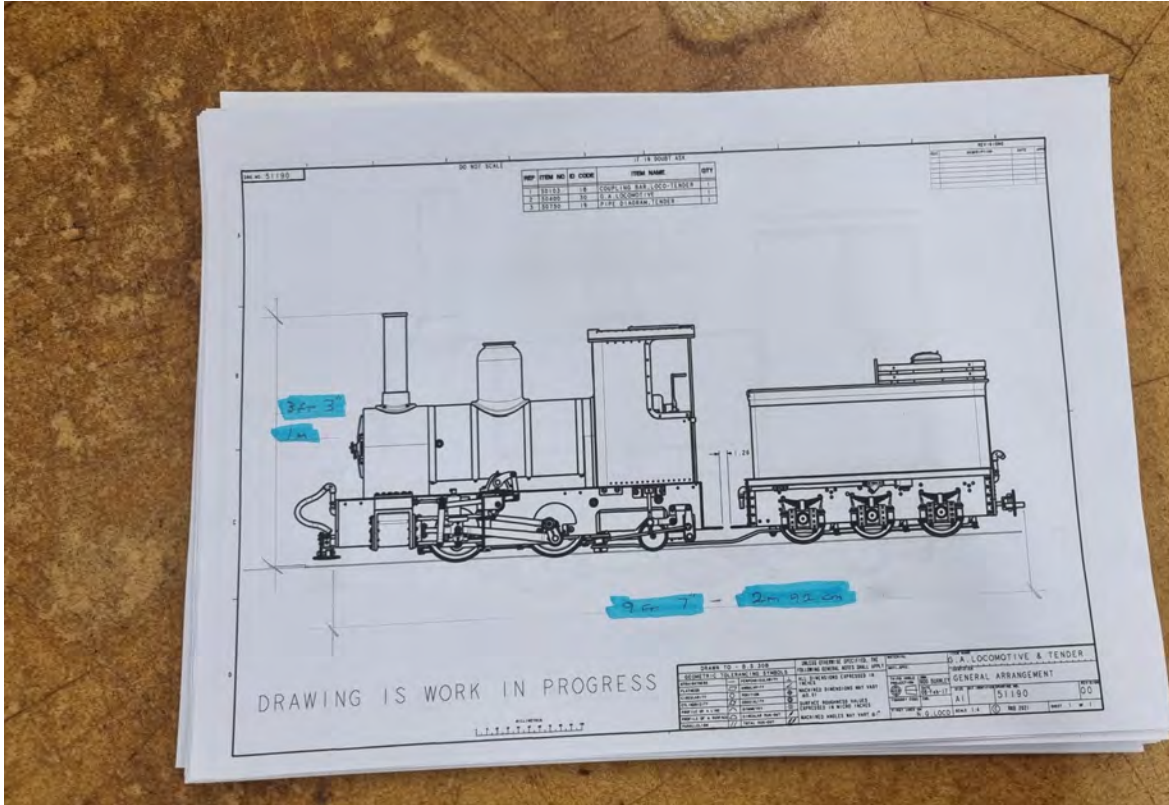


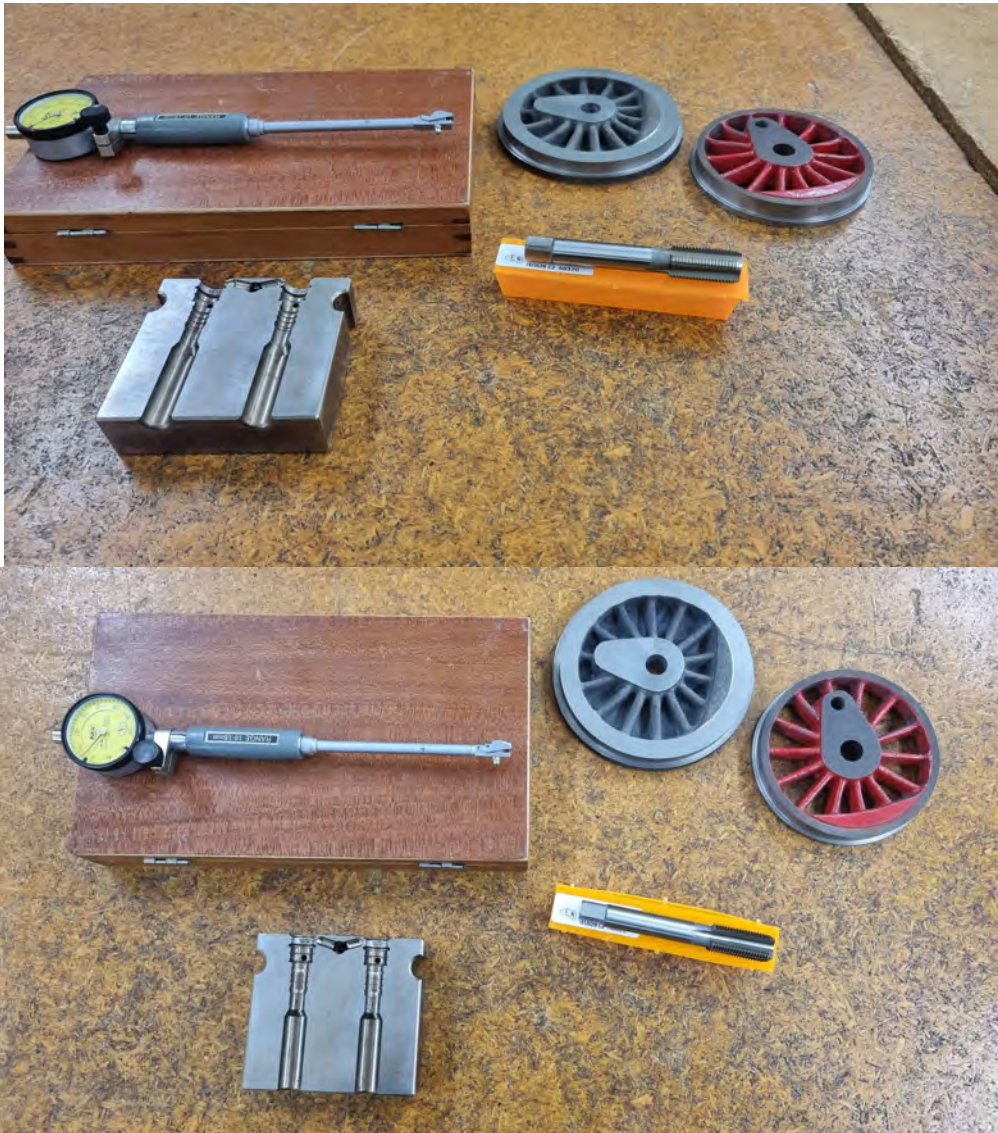
The tobacco tin needed no identification but the tap again brought in by Roger needed identifying this turned out to be a 1/2" extra fine national thread we discovered courtesy of google.

The next item was brought in by Tim Robinson which was a motor he was renovating for his reciprocating saw he had rewound it and was starting assembly.



Les Brown showed off his drawings for his next intended build and asked question around the suppliers of various item also enquired with regards to the weight





Dave Housley submitted a few items to talk on. The first was a metrology item of a bore gauge which when set with a setting ring or micrometer reads of on the face the size of the bore but remembering that a positive reading is undersize conversely negative oversize. The wheels for his Beejax are turned ready for fitting tyres and the shrink fitting of them was discussed. Also displayed were samples of laser deep engraving (embossed) and details of tap manufacturing.



ASME is selling excess copies of the Workshop Practice series Books

There is now a full set in the ASME Library.

*Although they are being regularly reprinted no 49
is the last new volume we have seen for some time*

*The committee has decided to sell remaining ASME
stock at **NZD \$5 each***

Most are sold—only a few left

Nos 5, 10, 30, 36, 38, 42, 28, 37, 30, 29, 20, 43, 33, 15, 47, 41, 36. were still available at last count

They will be on the table at the September General Meeting

Most can still be ordered from Tee Print at **GBP 7.95**