

Number 672

October
2021

The MICROMETER

AUCKLAND SOCIETY OF MODEL ENGINEERS INCORPORATED

PO Box 14570, Panmure, Auckland 1072, NEW ZEALAND

Club House: Peterson Reserve, off Peterson Road, Mt Wellington, Auckland 1060

Telephone: 09 570 5286 Club Web Site: www.asme.org.nz

President	Mike Moore	09 443 6050
	e-mail address	president@asme.org.nz
Secretary	Dave Housley	09 576 3923
	e-mail address	info@asme.org.nz
Editor	David Black	09 235 2372
	e-mail address	editor@asme.org.nz

REGISTERED NEW ZEALAND PUBLICATION



Greg Burrows' Grandad Lou Whyman trying out his Caribou in the very early days at ASME. More inside.

President's Report—October 2021

Hi to you all once again. Level 3 means different things to different people- takeaways for some, the chance to reconnect with some friends and family for others, and for many like me, a return to work. I didn't find the weather particularly conducive to working on many of my projects but I hope some of you were more productive.

Grant Anderson is keeping an eye on the club premises and the old Waterski clubrooms which now belong to Scale Marine Modellers, and he reports no sign of damage to date, but this could change with Daylight Saving and improving weather. At our Zoom meeting last Tuesday the committee decided to award the annual club charity donation of \$1000 to SMM to help with the costs involved in renovating their new clubrooms. We are optimistic that these will be completed by the New Year and that we can start to make use of the increased space which will then be available in our basement.

As the twenty or so members who joined us online on September 7th will know, we trialled a Zoom General Meeting which proved successful, and showed that the club can still be active despite members being unable to meet physically. Despite restrictions which curtail some of a GM's capabilities, it was a very worthwhile exercise, even though we had to provide our own tea and bikkies. Obviously, one of our longstanding regular features is the club auction night, which is traditionally held at the October GM. This will not be possible this year, and the committee would like to hear from members as to their preference for an auction in November (if possible, and if it is felt by some members that their pile of auction items cannot be stored until next year), or whether it can be put off until February- please give us your feedback.

An update on the health of our members mentioned in the last Micrometer; Murray Granger is out of hospital and has begun the long journey of recovery and hopes to be able to pay the club a visit before Christmas; and Andy Shirley is (too?) keen to get back to Sunday Running, so the delay with Covid may be good for his recovery. We would all like to see you back at the club Andy, but we don't want you overdoing things!

The October GM will be another Zoom meeting, so look out for the link to connect. David Black has been doing an excellent job of facilitating these and connecting is very straightforward, so we would like to see as many as possible give it a go. Please also give some serious thought to providing an entertainment segment for the GM;s next year- anything you find interesting will probably be of interest to the rest of us and 20-30mins worth is all that is needed.

In the meantime stay busy, safe and healthy.

Cheers,

Mike Moore.

President Mike is recommending that all members read the MEANZ update sent as a separate attachment in May. ASME is an active member of MEANZ, members should keep a lookout on the website too <http://www.pnmec.org.nz/meanz.php>, a good place to find other clubs when you are travelling. Just like us, our friends nationwide always welcome visitors.

OCTOBER CALENDAR **(Subject to COVID levels)**

- Tuesday October 5th, 7.30 pm** - General Meeting ZOOM
Tuesday October 12th, 7.30 pm - Workshop Night, TBA
Tuesday October 19th, 7.30 pm - Committee Meeting, TBA



Train Roster

ASME

DUTY ROSTER

Date	Electric Driver	Electric Driver	Steam Driver	Train Controller	Station / Guard	Station / Guard
3-Oct-21	A Shirley	P Woodford	Voluntary	<u>T Lawrence</u>	M Luxton*	D Beecher
10-Oct-21	I Ashley	A Bailey	Voluntary	<u>D Black</u>	B Matchett*	A van Zon
17-Oct-21	G Beazley	M Hollis	Voluntary	<u>S Meikle</u>	A Stratton*	R Shearer
24-Oct-21	D Housley	J Lankow	Voluntary	<u>T Robinson</u>	D Wilson*	J Anderson
31-Oct-21	M Moore	R Reichardt	Voluntary	<u>D Russell</u>	M Vickers*	K Ryan
7-Nov-21	A Shirley	P Woodford	Voluntary	<u>G Wills</u>	R Crook*	D Beecher
14-Nov-21	I Ashley	A Bailey	Voluntary	<u>B Aickin</u>	M Luxton*	B Matchett
21-Nov-21	M Hollis	D Housley	Voluntary	<u>D Black</u>	A Stratton*	R Shearer
28-Nov-21	J Lankow	M Plant	Voluntary	<u>P Dowdeswell</u>	M Vickers*	A van Zon

Bold and Underlined Name = **Train Controller**, i.e. the person in overall control of all operations for the day

Bold with Asterisked* Name = **Stationmaster**, i.e. the person responsible for activities in the station area and for the day's takings.

At the date of publishing Auckland is still at COVID Alert Level 3
Track running will not resume until Level One

Please Note:

If for some reason you are unable to attend on your rostered date, you are respectfully reminded that it is **your** responsibility to find a replacement member to fill the gap – please don't let the rest of the team for the day be left short-handed. **Note: the Train Controllers for both affected days must be informed of the swap in advance. It is the responsibility of the person who initiated the swap to do this.** Also advise Bob Aickin who is keeping track of the number of duties each of us perform during the year.

The details of the swap should be noted in the Run Book.

Also, please ensure the member you arrange a swap with is one who is rostered to undertake the same role to ensure we always have members with the appropriate training and experience on the day.

Club Notices

Help Wanted

Greville has been busy converting A&G Price 5" gauge trolleys to run on our 7-1/4" gauge track and has now finished the second one. But there are still 2 more to do, and he would like some assistance with these.

is quite involved, but Greville has produced all the parts required in the form of a kit, along with a comprehensive set of instructions, to make the job as easy as possible. If any member can help with this work, please contact Greville.

Missing Magazines

Model Engineer – Vol 216 No 4529, 4530; Vol 218 4562; Vol 222 4609; Vol 224 No 4636.

Model Engineer Workshop – No 240 April 2016 Live Steam – Vol 51 No 1, 2, 3 (2017)

Mike Jack is organising scanning & printing of the missing magazines so that the (currently) incomplete volumes will soon be able to be bound and available to members.

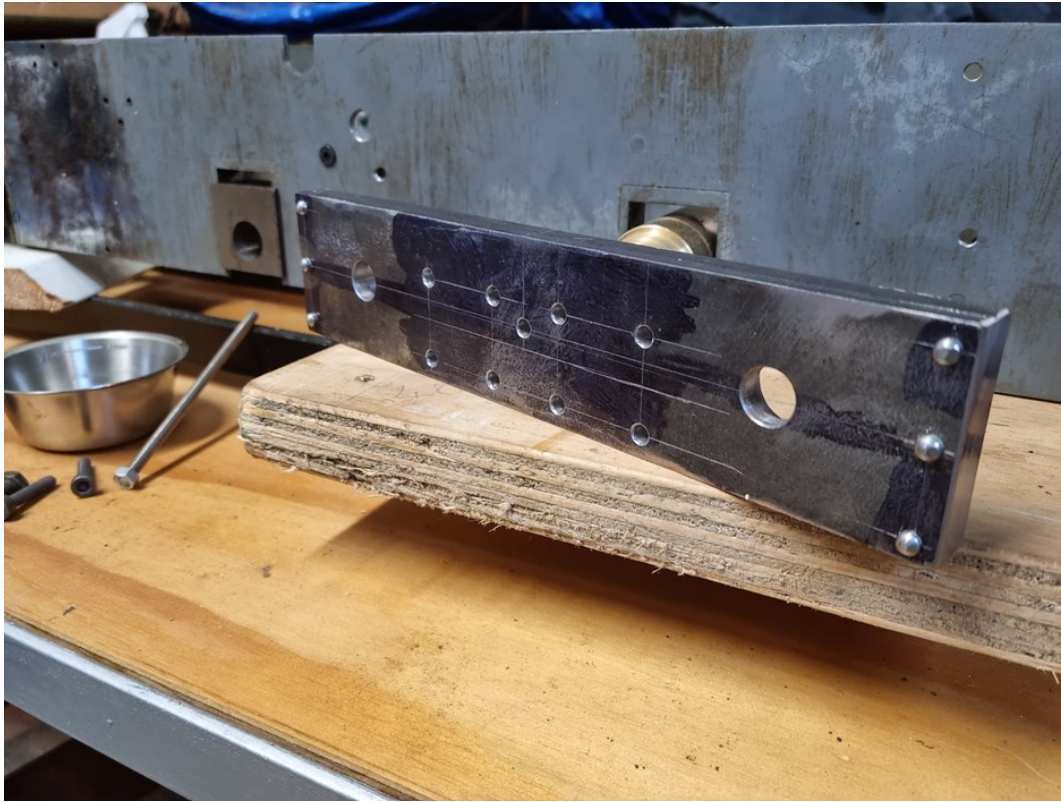
Panmure Baisin Festival 2022

Its on again next year, but this time on a Saturday. The ASME Committee has decided that we will participate but will also run on our usual Sunday, so we will need some extra volunteer crew for the Saturday.

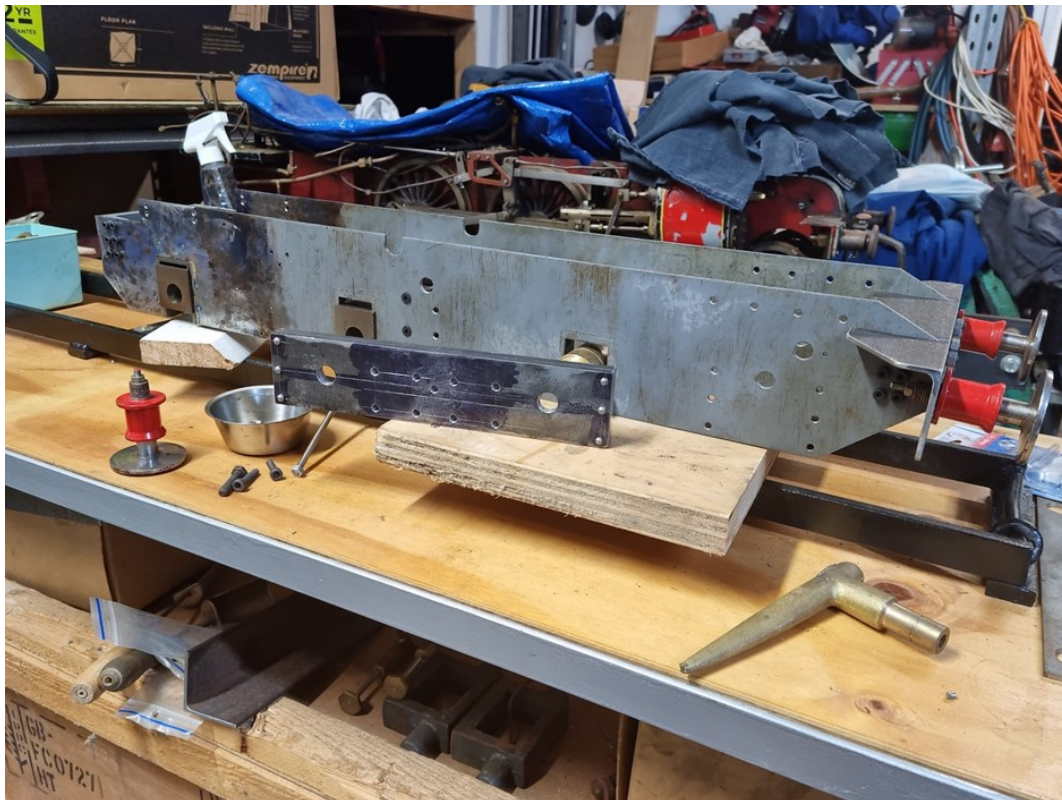
Dates are Sat 26 (Pbfd) and Sun 27 (ASME) March 2022

Bits and Pieces (by Zoom) from Dave Housley

The first photo is the laminate drag beam for the Beejax I am building. The only reason for the lamination was I had no material at home or at work and I was wanting to progress so I made this drag beam up I even had to turn up the rivets as I had none in stock.



The second photo is of the front buffer beam complete with buffers fitted. The handle in the photo is a rejected casting I had made and it did not come up to expectations. I made a set of four to fit to a 1947 MkIV Jaguar with all internals to accept the original lock barrels. The reject I use as a tapping piece as it is quite comfortable in the hand.





From Greville, top item are the two boiler "Top" feed water clacks – one for each axel Pumps as there are two.

Bottom left is a new fitting to enable quick supply of water to the boiler when first Filling before steaming up.

The drawn pipe work is to show going to the boiler fitting on the back-head of boiler.

PS I have since discussed this with Grant and I shall make the fitting from the boiler the Blow-down valve and change the "air connector to the male version I.E. open.

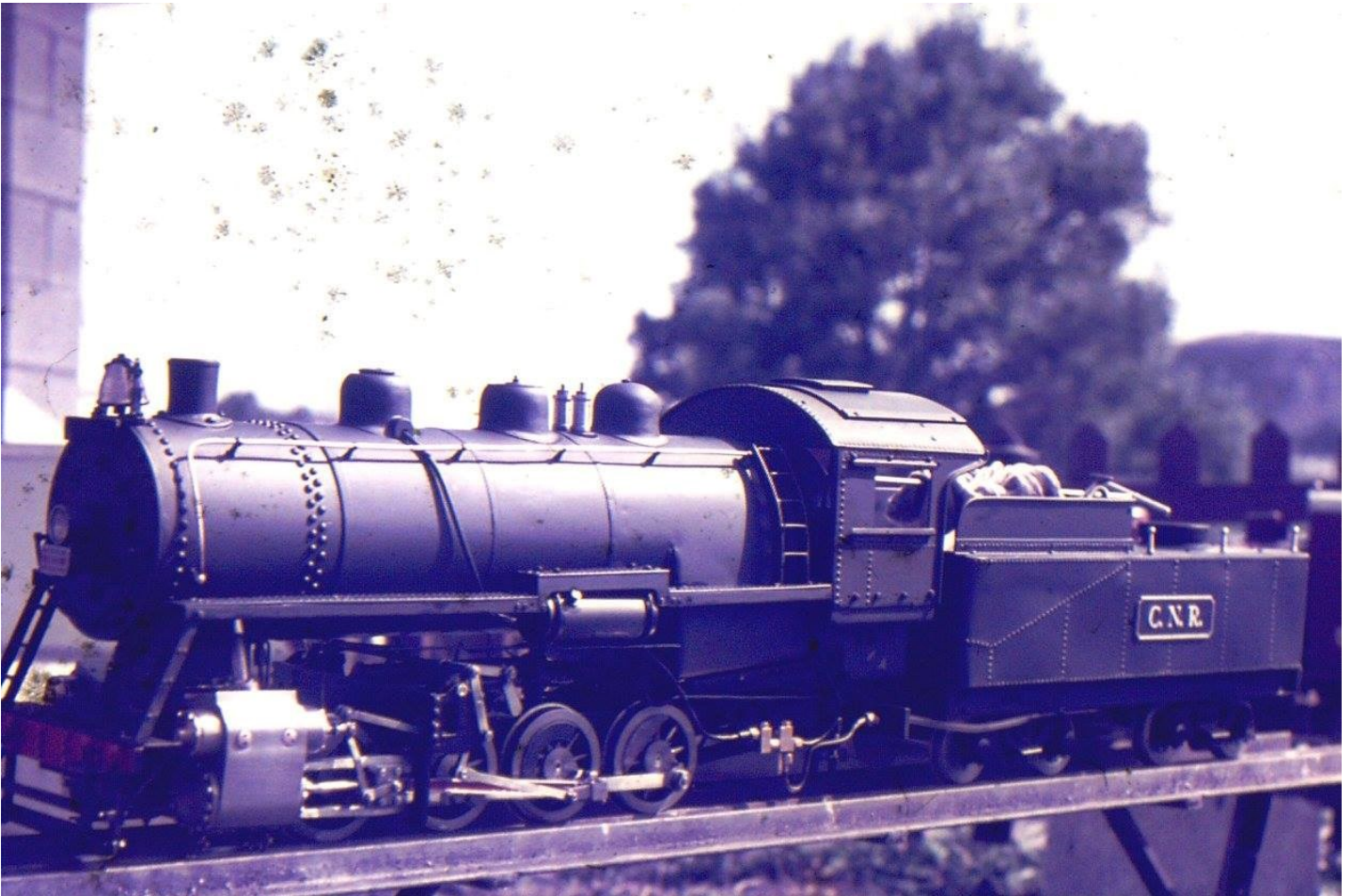
Happenings at the Waiuku Branch Line with Greg Burrows

September 2021

Well here we are now at week 5 of the latest lockdown due to Covid, So I hope you have all been in your workshops and trying to get through the boredom of not being able to go to the club to be with your other model buddies. This month in the workshop I have been busy working on my 3-1/2" Caribou that I started to overhaul back in July. (see the July newsletter for more information) As I stated in the last newsletter my Granddad and I started building her in 1972 so there was a small typo in the last write up. It is 49yrs old not 39 as pervious stated.

Photo-1 (below) This is Caribou as just finished in February 1973 on display at the ASME club, hence the number for the loco "1973"

Photo-2 (also on the cover) This is my Granddad Lou Whyman trying out Caribou in the very early days at ASME





Photo's-3 to 5 After sitting in my workshop for so long on a shelf, Caribou was looking very unloved and it was time to get her down and start removing all the accessories and boiler from the frames. So little by little off came the Boiler, cab running boards and fittings. Also the regulator was frozen solid and would not work, upon removing the steam dome I soon found out why. The calcium in the water had crystallized all over it and had it locked solid, this explained why it wouldn't work. To get the regulator out I had to remove the superheater, and this required the removal of the smokebox first. Removing smokebox was the easy part.



Photo's-8 & 9 With the superheater out I thought I would give them a quick sandblast to see what condition they were in. As you can see I was in full Health and Safety mode with full PPE covering! This work ok but I did use lots of Glass beads to do a small amount of work. I did manage to get hold of a bead blaster I could use for a while for the other parts.





Photo's-10 to 12 After removing all the necessary parts from the boiler it was time to clean it out! I mixed up a solution of citric acid (1kg citric acid to 30 litres of water, quite strong) and placed the boiler in it for 2 days to see how it would go. After 2 days I took it out and washed it inside and out and was very pleased with the results. Not only did it clean the inside of the boiler very well it also cleaned out the tubes as well, so it is like a new boiler again and should steam well once more.

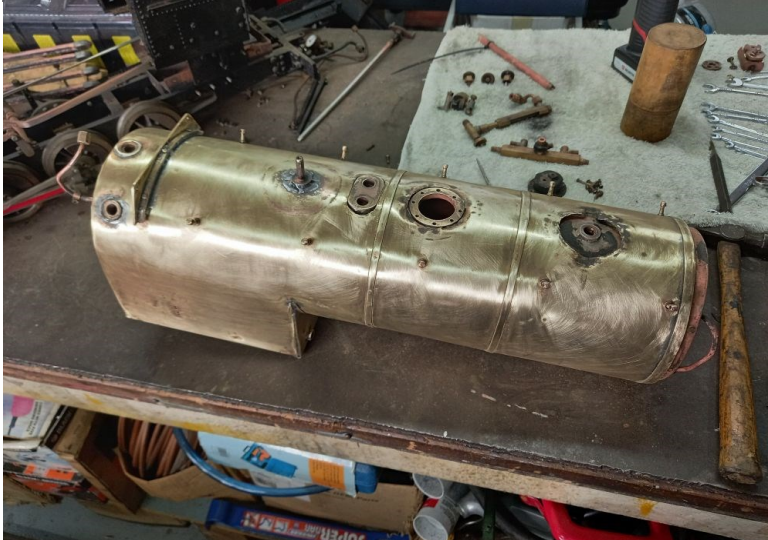


Photo-13 After installing the regulator and all the other fittings it was time to give it a hydrologic test so we could get a new boiler ticket sorted so we can run again. This test went well, so it was onto the next operation.



Photo's-14 to 16 So back to putting the smokebox back on and other parts before we could give her a nice coat of black paint to bring it back to looking the part again. It took me a while to find the number plate of the front of the smokebox as it had been knocked off some years ago and I had put it in a safe place so I wouldn't lose it, well we all know what happens after a couple of years! You forget where things are. Anyway with this done I'm pretty happy with how she is looking now and I can now move on to the next part of the overhaul. The Chassis.

So that's enough from me, we hope you are all making the most of this time and staying safe. Greg B

