

Number 669

July  
2021

# The MICROMETER

AUCKLAND SOCIETY OF MODEL ENGINEERS INCORPORATED

PO Box 14570, Panmure, Auckland 1072, NEW ZEALAND

Club House: Peterson Reserve, off Peterson Road, Mt Wellington, Auckland 1060

Telephone: 09 570 5286 Club Web Site: [www.asme.org.nz](http://www.asme.org.nz)

<b>President</b>	Mike Moore	09 443 6050
	e-mail address	president@asme.org.nz
<b>Secretary</b>	Dave Housley	09 576 3923
	e-mail address	info@asme.org.nz
<b>Editor</b>	David Black	09 235 2372
	e-mail address	editor@asme.org.nz

REGISTERED NEW ZEALAND PUBLICATION



Grant has found a photograph from nearly 60 years ago, ASME members gather with their engines at the old site in Panmure, which became a public swimming pool.

Can you identify the few that Grant isn't sure about? (ASME ARCHIVES)

# **President's Report**

**July 2021**

Firstly, I would like to take the opportunity to thank David Black for stepping up and providing an excellent "editorial" at short notice, after I managed to lose my report somewhere in the ether last month.

This month there has been a bit happening around the club, especially on the weather front. The rain has put in a rather regular showing on Sundays, which has affected patronage on Running days to quite an extent. A cancellation was forced on us on the 20<sup>th</sup> by the heavy rain on the morning of the 19<sup>th</sup> which showed up the shortcomings of the waste water system by blowing a manhole cover off up on the embankment and flowing sewerage down onto the track. I am hoping AC have resolved the issue by now, but I have yet to be advised at time of writing.

The fibre phone line installation has been another major headache, and the committee have been grateful for the knowledge and hard work of David Black and Timothy Robinson in getting it as far as it is, though needless to say, there is more to be done.

Some original, but unwanted, artwork was posted on the toilet block recently, and I am pleased to report that the AC responded very promptly following a request from Dave Housley- well done Dave!

As is to be expected at this time of the year, there has been a bit of a drop off of members attending the last couple of GM's, but I would like to encourage those who can to make the effort to get along- perhaps contact other members in your area with a view to carpooling for those who are not so confident in driving in these conditions.

I look forward to seeing a good turnout at the next meeting on July 6<sup>th</sup>, and bring along a few items for the Bits and Pieces.

Cheers,

Mike Moore.

President Mike is recommending that all members read the MEANZ update sent as a separate attachment last month. ASME is an active member of MEANZ, members should keep a lookout on the website too <http://www.pnmec.org.nz/meanz.php>, a good place to find other clubs when you are travelling. Just like us, our friends nationwide always welcome visitors.

---

## **JULY CALENDAR**

- Tuesday July 6th, 7.30 pm** - General Meeting ASME Clubrooms  
**Tuesday July 13th 7.30 pm** - Workshop Night, ASME clubrooms  
**Tuesday July 20th, 7.30 pm** - Committee meeting, ASME clubrooms



# Train Roster

## ASME

## DUTY ROSTER

Date	Electric Driver	Electric Driver	Steam Driver	Train Controller	Station / Guard	Station / Guard
<b>4-Jul-21</b>	D Housley	J Lankow	Voluntary	<b><u>T Robinson</u></b>	<b>K Ryan*</b>	D Beecher
<b>11-Jul-21</b>	M Moore	R Reichardt	Voluntary	<b><u>D Russell</u></b>	<b>R Souter*</b>	R Shearer
<b>18-Jul-21</b>	P Woodford	I Ashley	Voluntary	<b><u>G Wills</u></b>	<b>A Stratton*</b>	A van Zon
<b>25-Jul-21</b>	A Bailey	M Granger	Voluntary	<b><u>B Aickin</u></b>	<b>D Wilson*</b>	M Vickers
<b>1-Aug-21</b>	M Hollis	D Housley	Voluntary	<b><u>P Dowdeswell</u></b>	<b>L Brown*</b>	D Beecher
<b>8-Aug-21</b>	J Lankow	M Moore	Voluntary	<b><u>D Black</u></b>	<b>R Crook*</b>	M Luxton
<b>15-Aug-21</b>	R Reichardt	P Woodford	Voluntary	<b><u>T Lawrence</u></b>	<b>R Shearer*</b>	B Matchett
<b>22-Aug-21</b>	I Ashley	A Bailey	Voluntary	<b><u>S Meikle</u></b>	<b>K Ryan*</b>	R Souter
<b>29-Aug-21</b>	G Beazley	M Granger	Voluntary	<b><u>T Robinson</u></b>	<b>A Stratton*</b>	M Vickers

**Bold and Underlined** Name = **Train Controller**, i.e. the person in overall control of all operations for the day

**Bold with Asterisked\*** Name = **Stationmaster**, i.e. the person responsible for activities in the station area and for the day's takings.

At the date of publishing Auckland is still at COVID Alert Level 1—Please follow the rules and encourage scanning in

### Please Note:

If for some reason you are unable to attend on your rostered date, you are respectfully reminded that it is **your** responsibility to find a replacement member to fill the gap – please don't let the rest of the team for the day be left short-handed. **Note: the Train Controllers for both affected days must be informed of the swap in advance. It is the responsibility of the person who initiated the swap to do this.** Also advise Bob Aickin who is keeping track of the number of duties each of us perform during the year.

The details of the swap should be noted in the Run Book.

# Club Notices

## **Help Wanted**

Greville has been busy converting A&G Price 5" gauge trolleys to run on our 7-1/4" gauge track and has now finished the second one. But there are still 2 more to do, and he would like some assistance with these.

is quite involved, but Greville has produced all the parts required in the form of a kit, along with a comprehensive set of instructions, to make the job as easy as possible. If any member can help with this work, please contact Greville.

## **Missing Magazines**

Model Engineer – Vol 216 No 4529, 4530; Vol 218 4562; Vol 222 4609; Vol 224 No 4636.

Model Engineer Workshop – No 240 April 2016 Live Steam – Vol 51 No 1, 2, 3 (2017)

Mike Jack is organising scanning & printing of the missing magazines so that the (currently) incomplete volumes will soon be able to be bound and available to members.

## **Beejax Patterns**

The Beejax (an improved Ajax) was designed by ASME member the late Geth Creagh.

**They have been found in the ASME basement—contact Mike Banks!**

*Note from Dave Housley ..*

Our visitor for June was Steven Endres had brought along some of his model locomotives and track ,this really sparked the members attention as the items he displayed brought back memories to a lot of members being the models and track were Hornby Three Rail with steel pressed track bed. He had brought these along to ask specific advise and there was no shortage of good advice given from the members

## Telecoms and Information Technology

As previously reported Spark advised ASME that copper telephone connections are no longer supported in our area. The clubrooms were connected to an old wire pair dating back to Post Office days. Chorus has been very helpful in providing an underground fibre connection at no charge. Arrangements were made to connect the clubrooms to the internet with a voice over internet telephone line - VOIP. This means that the clubrooms will have wi-fi but may have involved updating our alarm to work directly over the internet. This project is being managed by David Black, Timothy Robinson, Greville Wills and Bruce Lawson. There was a delay in gaining Council approval to dig the trench—and a small (ish) fee to go with it! At the date of publication the connection is complete, the VOIP line is running with our original number and Timothy and Bruce are have completed fine tuning to our alarm work with a second VOIP line which will delay having to upgrade it. Wi-fi is up and running. More at the General Meeting.

## The Micrometer

We are short of copy and photographs for the Micrometer, please consider writing and submitting any photographs to editor@asme.org.nz.

## Zoom Committee Meetings

The last committee meeting was by Zoom. These are very successful but now that the time limit is being imposed on the free service, a decision on one of several options will need to be made by the committee. One very useful facility is the ability to record the meetings which is much easier for the Secretary.

**Manu Ariku Railway** (MAR) is on the Manu Ariki Maori Reservation (marae), situated about 10kms north of Taumarunui on the old Ongarue back road. (a MEANZ member railway) is an approximately 3.5kms railway designed to replicate the Raurimu Spiral and is a great 7.25g miniature railway. Built at the request of the marae elder Mr Phillips in the 1990s, it has been largely inactive since his death (about 2012) as a result of misunderstandings between the family and other beneficiaries (defined as "The beneficiaries of Manu Ariki are "all people of New Zealand, in particular the Māori people" and those people who have an affiliation with MANU ARIKI MARAE."). Naturally anyone with an interest in the railway is a beneficiary.

ASME understands that the issues have now been largely resolved and we look forward to further updates from Dave Giles who remains involved.

A short (6min) video of MAR features can be seen on YouTube at:

<https://www.youtube.com/watch?v=z9O6BdG9tl8>

**A power outage** that affected ASME facilities went on for about 4 days in June until Vector installed a generator at the transformer and finally a new section of underground cable about a week later.

# May Bits and Pieces, with Dave Russell

1st June 2021  
Photos and report by Dave.

Not many members in attendance this month presumably as the weather was quite cold.  
The Bits and Pieces where a mixed bag of items.



I had been given the wife's old laptop as she had bought a new one.

I have given it a new lease of life by replacing the old hard drive with as solid-state unit, also a new battery.

The machine now starts up in a fraction of the time it used to and the battery lasts 8 hours now instead of 3-1/2, largely due to the far more efficient storage drive. Mirroring the original drive and operating system was easy via a cable that would plug into a USB port



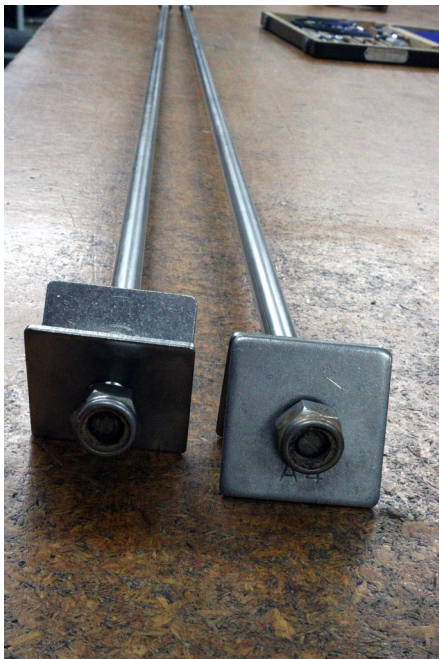
Peter Woodford brought in a NSK made in Japan 1 - 4 inch Micrometer, yes in imperial. The mic had a bit of rusting but came in its wooden box with test pieces and extension anvils. Quite a nice tool.



From the floor we had some what are they items, the top one is a roller used when laying up fibreglass and used to squish and roll the resin into the matting. The lower yellow one was a double ended abrasive touch up stone for commutators.



These manifolds are for Mike Jacks class 3 project locomotive. The one on the left was from an original batch of castings that needed to be modified to fit inside the large and complex smoke box saddle fabrication. The right hand one was made via investment casting and should have worked out a bit cheaper but due to a miscommunication at the foundry the price was quite a bit more than expected.



New tie bars for the back steps by the clubrooms are made from Stainless Steel and should long outlast the original ones that had all but rusted through.

Provided by President Mike and fitted at the next working bee

Dave missed getting photos of the last couple of items because they arrived late, first was a hole saw that Murray Hollis had made a fibre washer to fit between the cutter and the drive plate with dogs to drive the cutter. The reason was to try and stop it rattling when being used.

The last item tonight was nice 00-gauge model A4 locomotive, a visitor "Steve Endres" had brought it in to see if we could figure out why it would not run, he also had one of those modern Hornby controllers that looked like it might be digital. The locomotive was made by Meccano who were part of Hornby for some time. The engine was made to run by placing a wire on a wheel and another to the third rail contact.

*Editors Note : It is difficult for many members to get to the meetings before 7-30 but it is worthwhile if possible having them on the table by 7-15 so Dave can take his excellent photographs for the Micrometer and therefore the Society's records.*

**Mike** from Queensland writes:

I am looking for Full Plans for the **Stephenson Rocket Engine**.

I have some plans , but seem to be not complete,

At the moment i am building a small **Dribbler Steam Engine** , 90% complete I am a member of the Mt Gravatt , Mens' Shed, Brisbane, we have a few machines there, a few of us have shown interest because of my Dribbler, so the interest is there. Looking for some one who has built this, maybe they can correct the plans and forward info on any mistakes and updates they have acquired while building this. I have found plans for the Dribbler , but at the time i just scaled the Photos on the net.

[mjjhh4444@yahoo.com](mailto:mjjhh4444@yahoo.com)

