

Number 643

March
2019

The MICROMETER

AUCKLAND SOCIETY OF MODEL ENGINEERS INCORPORATED

PO Box 14570, Panmure, Auckland 1072, NEW ZEALAND

Club House: Peterson Reserve, off Peterson Road, Mt Wellington,
Auckland 1060

Telephone: 09 570 5286 Club Web Site: www.asme.org.nz

President	Timothy Robinson	09 296 2949
	e-mail address	president@asme.org.nz
Secretary	Mike Moore	09 443 6050
	e-mail address	info@asme.org.nz
Editor	John Lankow	09 576 5400
	e-mail address	editor@asme.org.nz

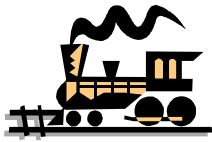
REGISTERED NEW ZEALAND PUBLICATION

ASME's DSA Loco takes to the track

Allan Bailey guides the Dsa locomotive around the track on Sunday January 13th. This was the first time this loco has seen any action for a long time. Unfortunately, it was once again forced to retire (with motor brush problems this time) before the day was out.

Photo: Grant Anderson





Train Roster

Date	Electric Driver	Electric Driver	Steam Driver	Train Controller	Station / Guard	Station / Guard	
3-Mar-19	M Granger	J Lankow	Voluntary	<u>B Aickin</u>	D Wilson*	S Wilson	
10-Mar-19	M Moore	P Moy	Voluntary	<u>P Dowdeswell</u>	R Crook*	D Vaughan	
17-Mar-19	R Reichardt	A Shirley	Voluntary	<u>G Wills</u>	K Ryan*	S Shirley	
24-Mar-19	P Woodford	I Ashley	Voluntary	<u>T Lawrence</u>	P Jones*	M Vickers	
31-Mar-19	A Bailey	G Beazley	Voluntary	<u>S Meikle</u>	M Luxton*	D Beecher	
7-Apr-19	M Granger	M Plant	Voluntary	<u>T Robinson</u>	B Matchett*	D Vaughan	
14-Apr-19	M Hollis	D Housley	Voluntary	<u>G Anderson</u>	R Souter*	M Vickers	
21-Apr-19	J Lankow	M Moore	Voluntary	<u>D Russell</u>	A Stratton*	D Beecher	
28-Apr-19	P Moy	A Shirley	Voluntary	<u>G Wills</u>	K Ryan*	S Shirley	

Bold and Underlined Name = **Train Controller**, i.e. the person in overall control of all operations for the day

Bold with Asterisked* Name = **Stationmaster**, i.e. the person responsible for activities in the station area and for the day's takings.

Please Note:

If for some reason you are unable to attend on your rostered date, you are respectfully reminded that it is **your** responsibility to find a replacement member to fill the gap – please don't let the rest of the team for the day be left short-handed. **Note: the Train Controllers for both affected days must be informed of the swap in advance. It is the responsibility of the person who initiated the swap to do this.**

The details of the swap should be noted in the Run Book.

Also, please ensure the member you arrange a swap with is one who is rostered to undertake the same role to ensure we always have members with the appropriate training and experience on the day.

MARCH CALENDAR

Tuesday March 5th, 7.30pm - General Meeting, ASME clubrooms

Tuesday March 12th, 7.30pm - Workshop Night, ASME clubrooms

Saturday March 16th, 12 Noon - A fun run, a barbecue lunch, and the unveiling of a plaque commemorating the late Jim Greasley's contributions to ASME which include the building of the Trestle Bridge.

Tuesday March 19th, 7.30pm - Committee Meeting, ASME clubrooms

Coming Up - Hamilton Model Engineers, Inc. Steam 'N' Steel International Convention. Thursday 9th - Monday 13th January 2020. Note: these dates have been updated since earlier advertising by Hamilton Model Engineers. If you need more details, email the ASME Secretary or the Editor.

Committee Comments

Committee Comments – March 2019

The Panmure Basin Fun Day on 10th February 2019 was a big success. The team were there well before time (in fact some before 9am!) and ready to move the crowd. Some 21 members and WMR friends turned up to help through the day. The light lunch sustained members well (*Thanks, Jan! - Ed*), as did drinks at the station to help keep up our liquids on a very hot sunny day. Three steamers were in operation almost the whole day – Bruce Cooper on his recently refurbished Ajax (Kathleen), Mike Banks on the GWR King and Grant Anderson on the Phantom (Jw62). In addition, the Ec ran all day with a variety of drivers and guards. Plenty of station workers were on hand to load the passengers, sell and clip tickets and give the safety message.

The Auckland Council work in the car park is now complete. The last “improvement” has been the marking up of our unloading area with bold yellow cross-hatch marking and NP signage. It remains to be seen how much impact the 25% reduction in parking spaces has on the use of the park and Basin facilities as a result of the expected difficulty for the visiting public in finding a convenient place to park. We remain hopeful that several more car parks may yet be arranged.



The additional level of security at the clubhouse through using pin numbers to cancel the alarm will be introduced from 1st March. This change will simply require a pin number to be entered into the alarm keypad to cancel the alarm, rather than using the alarm key switch. The current key will still be used to open gates, doors and padlocks as at present. Further details will be advised directly to those members requiring access to the club, before the change date.

The Annual Return has been completed and lodged with the Charities Commission before the deadline – thanks to Greville Wills for putting together all the information required.

A daughter (Heather) of the late Warren Green has donated a number of books of model engineering interest which her father had when he was a member – these will be available from the library soon.

Mike Banks and Bruce Cooper are organising a model engineering display for the Club at the Brits and Euro Car Show at Lloyd Elsmore Park in Pakuranga on Sunday 3rd March – the display will include several locos and some items from the Club's display case. Last year, the display Mike organised drew quite a lot of interest from those visiting the show and it kept the few members manning the display very busy. Mike and Bruce are looking for some helpers to give them a break throughout the day, so if you have an hour or two spare, please give them a call to arrange times.

Don't forget the barbecue luncheon and unveiling of the plaque commemorating the late Jim Greasley's immense contribution to our Club – this will be held from 12 noon on Saturday, 16th March at ASME.

Tony Lawrence, assisted by Bob Aickin, has been busy rebuilding a section of the rear fire escape stairway handrail and replacing several rotten foot treads. Tony, assisted by Mike Moore, has also been busy replacing some of the bolts in the trestle bridge after developing a water-cooled method of cutting the timber out from around the old bolts which was otherwise making removal impossible. The new method, using a diamond tipped holesaw is working well and the first few bolts have now been replaced.

Mark Luxton is underway in his new role as our Librarian – he has assembled the backlog of magazines and arranged for them to be bound. He expects these bound issues to be available to members within the next few weeks or so.

The Dsa locomotive which has been out of service for several years was finally reintroduced into Sunday running in January. Unfortunately, after several hours running, the brushes overheated and it is now awaiting some further repairs by President Timothy. This loco is now fitted with a working, accurate speedometer.

Following a request from the floor at the February General Meeting, it has been decided to issue a draft edition of the minutes of the 2018 AGM (held in December) so that those who were unable to attend the AGM can be kept informed. The minutes will be subject to ratification at the 2019 AGM.

Minutes Annual General Meeting 4th December 2018.

Called to order at 7.39 pm.

Chaired; Timothy Robinson.

Present; 25 members.

Apologies; Graeme Murray, Peter Woodford, Mike Orange.

Visitors; Nil.

Minutes; The minutes of the AGM of the 5th December 2017 were read by the secretary and accepted as a true and accurate record, moved by Mike Banks, sec. Dave Russell, carried.

Matters Arising; Nil.

President's Report; Timothy read out his Annual Report to the Meeting. Acceptance was moved by Bruce Matchett, seconded Mike Banks, carried.

General Manager's Report; Greville tabled the annual accounts for the year ended 30/09/2018, following which the accounts were moved by Greville, sec Mike Banks, approved by the meeting.

He then moved that subs remain at the current levels, sec David Black. Greg Burrows reported that in his opinion the subs at current levels were amongst the highest in NZ, and that this was making it unaffordable for many senior members. This was discussed and the original motion was put to the vote; 16 for, 1 against, carried.

Notices Of Motion; Nil.

Election Of Officers; The following nominations were received;

President: Timothy Robinson

Vice President: Greville Wills

Secretary: Mike Moore

Treasurer: Grant Anderson

Editor: John Lankow

Librarian: Mark Luxton.

Committee: Dave Housley, Bob Aickin, Bruce Matchett, Allan Stratton.

David Black moved that nominations be accepted, sec Mike Banks, carried.

Other Business; Greville proposed a vote of thanks to Grant for his assistance in preparing the financial report.

Meeting closed at 8.10pm.



Wanted: Keen Model Engineer!

The Secretary has received an email from ex ASME member Graeme Selkirk who is looking for someone to complete his father's 3 -1/2" gauge Hielan Lassie loco (not Britannica as in the email). I have reproduced his letter below in an abbreviated form. Anyone interested can contact Graeme by email to his address gwselkirk@mailworx.nz as below (preferably with a copy to Mike at info@asme.org.nz as well).

From: **Graeme & Wendy Selkirk** <gwselkirk@mailworx.nz>
Date: Mon, Feb 11, 2019 at 3:56 PM
Subject: Model train
To: info@asme.org.nz <info@asme.org.nz>
Cc: adrianselkirk@gmail.com <adrianselkirk@gmail.com>

My father Ewen Selkirk was a member of your club for many years (as was I) probably from 1965 to 1995. I have a partly finished model train (Britannica I think) of Ewens . The tender is finished and the engine has the chassis complete and the boiler partly completed. Would there be anyone in the club who may like to take on and complete this train?

Attached are a couple of photos.

Cheers, Graeme

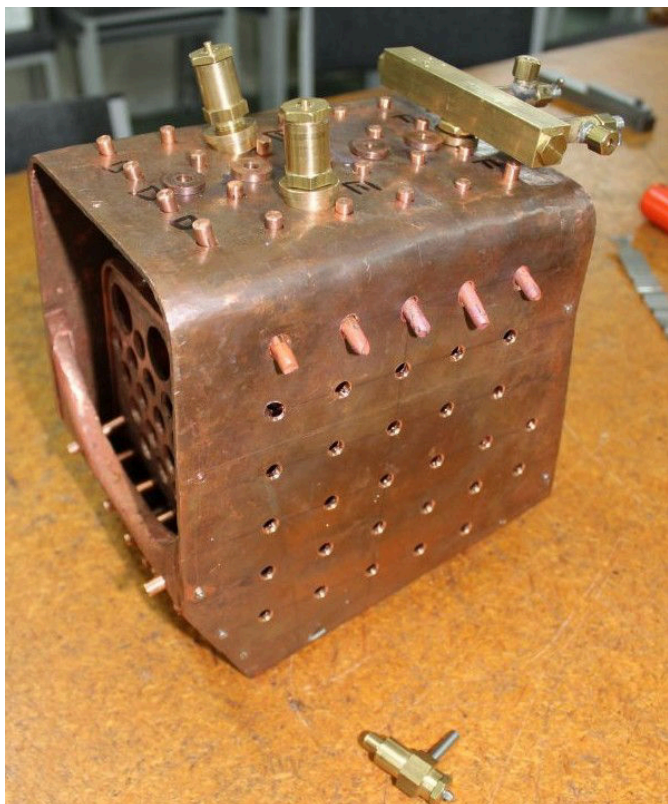


Workshop Night Tuesday 12th February 2019

Presented by Greg Burrows

Tuesday night was a good start to the New Year for the ASME Workshop night meeting. We started at 7-30 and approximately 11 members turned up to talk about the bits and pieces they had brought along. The meeting was closed down at around 9.30pm

The bits and pieces started with these photos of the firebox for a 5" Gauge SAR locomotive built by **Bruce Cooper**. He is continuing to make good progress on this model. The model was started by his father many years ago.



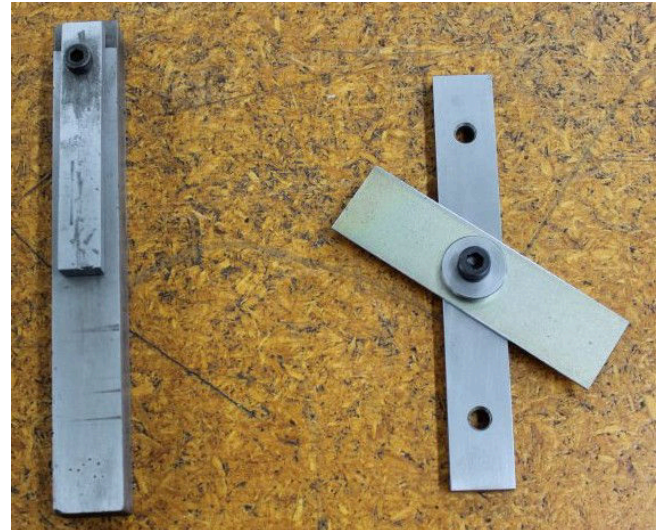
This item was brought in by **Mike Banks**. It is a collet set he bought for his milling machine and he has adapted it so he can use it in his lathe as well. What he has done is to get hold of a number 5 Morse taper collet head to go with the R8 set so he can use the same set of collets for the mill or lathe. This saves on doubling up on another set of collets.





Dave Russell brought along this Clarkson cutter hold and was asking about the sizes of threads in the back of it to draw it into the mill spindle. This hold also started up a good conversation about the pros and cons of these types of holders.

Dave also had with him a special little tool that was made by an old member he knew. It is for setting angles and to generally help with setting up of items in the mill or transferring an angle to another machine.



Michael Jack has been busy making improvements to a driving dog he picked up overseas so he can turn the axles for his locos between centres. Mike had problems from the beginning with the amount of runout this unit had and he has greatly improved it now.

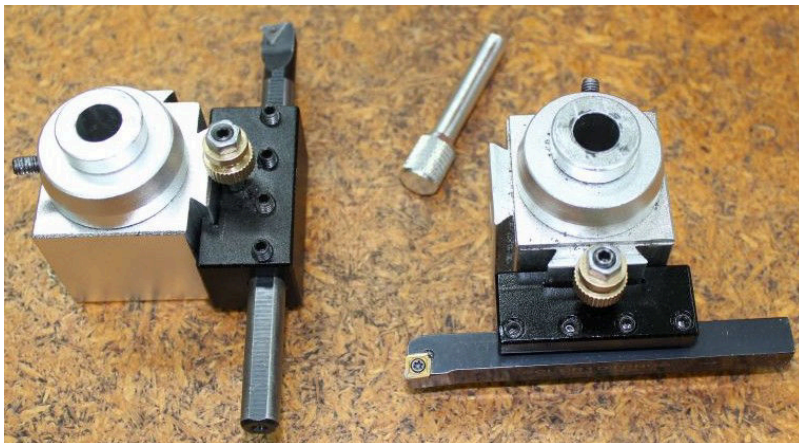
Grant Anderson started a discussion at the last ASME General Meeting about making some new piston rings for his 7-1/4" loco. The only material he could get easily was solid bar stock and not wanting to waste all that material from the inside (as he only need a thin section of ring) to make his rings, was asking if anyone had a good idea to remove a large plug out of the middle thus leaving the thin ring he was after. He tried the standard hole saws, but they have very fine teeth and not much depth to them. A couple of us told him about these hole saws that only have a couple of teeth and usually can bore a lot deeper. Mike Banks was in the local hardware store and found what we were talking about and brought one along to show and tell.





Peter Woodford brought along this guessing game for us to see what we know. It turned out to be a piston ring compressor. It is a little different from normal as it has serrations around the band so that when you grip the ring to compress it and go about pushing the piston and rings into the bore, the serrations stop the band from entering into the bore as well. This happens sometimes with the standard flat band on the more common type we see. The two different bands are to accommodate different sizes of pistons.

Peter Tomkies has been looking at trying to clean up this old sun dial he has had stashed away for a while and was asking if we know of an easy way to clean it up. One of the suggestions was to soak it in citric acid as this will clean it up nicely. We use Citric acid for cleaning boilers when building them or for cleaning them out to remove any build-up of deposits on the inside.

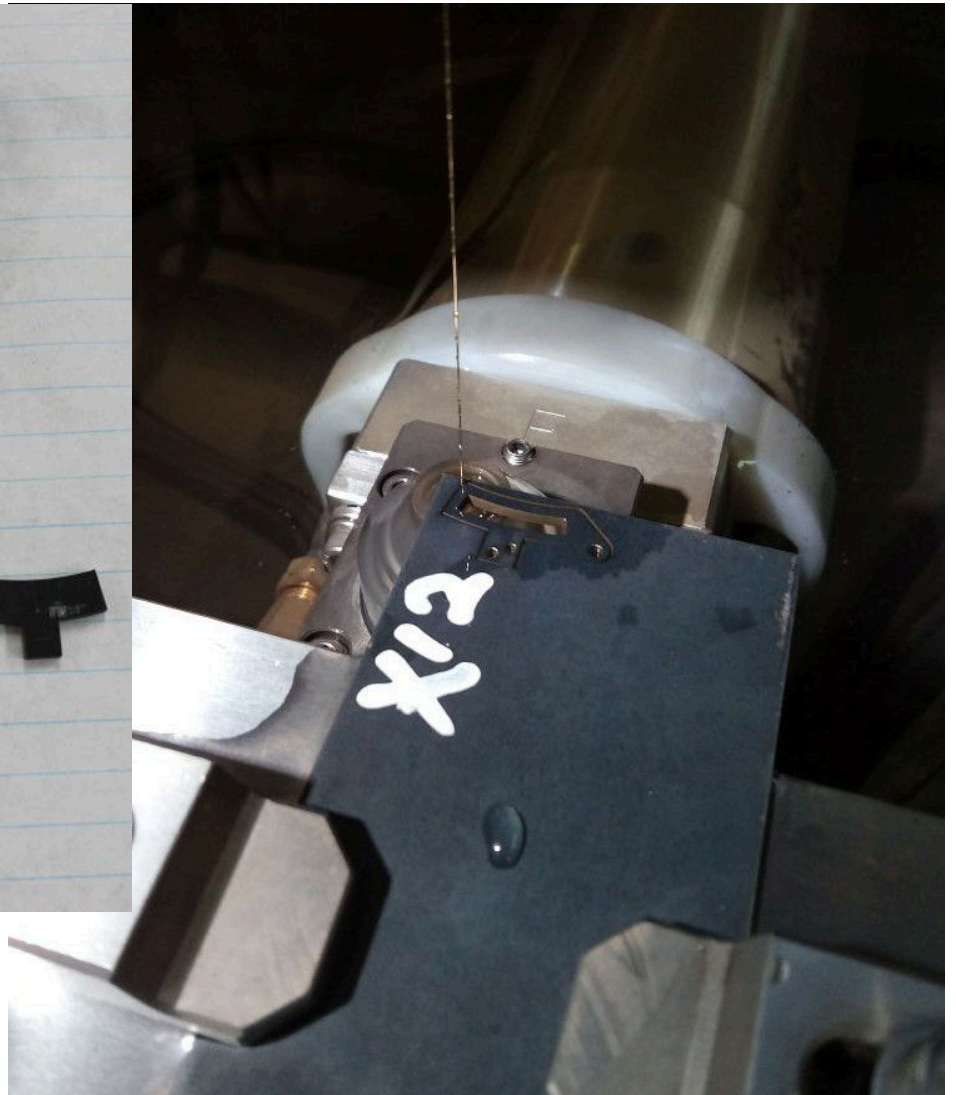


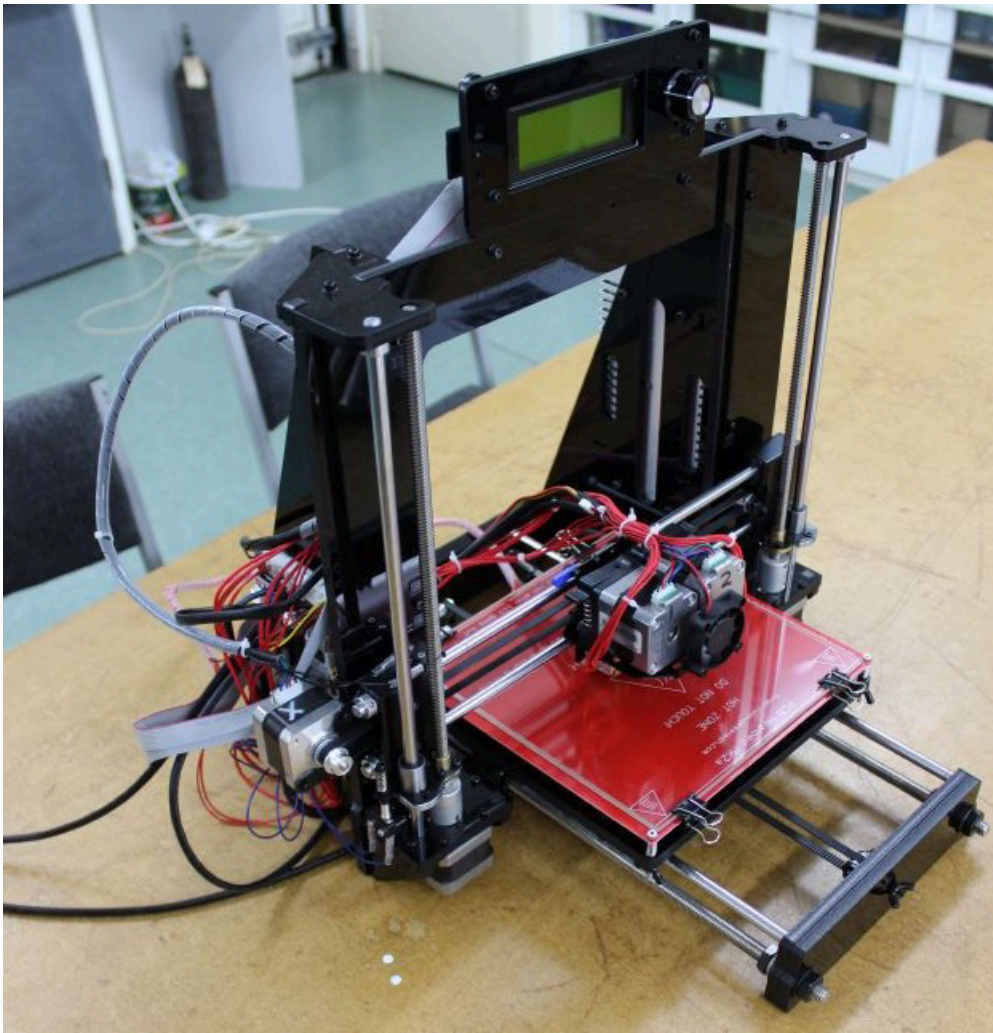
The next items were also from Peter. He was looking for a quick-change tool post for his lathe and after looking online found one that looked ok, but on arrival at his workshop and after trying it in his machine it soon proved to not be as good as it looked in the photos. The biggest problem seems to be the way it locks each of the tool blocks onto the tool post. This one uses a cam that pushes a button out of the tool post to put pressure on the tool block forcing it to push away to lock it in position. So far so good he thought. But the truth was in the trialling of it. No sooner had he put a cut on the tool started to move all over the place and proved to be useless. The problem is that by pushing the tool blocks away from the tool post, you are also moving away from the Vee slides that hold the tool block in the right position and alignment. That is where the cam type that pulls the tool block in against the Vee slides is the best.



This is a pair of Surgical Grippers that were suggested would make a great tool for holding those little nuts and bolts that we all have trouble getting into tight places where our fingers won't fit. Sorry I missed who brought these along.

Pictured below are some parts that **Greg Burrows** has been making for his 45mm gauge Garden Railway live steam loco. These Expansion links and Combination rod (still attached to the bar stock) have been cut out using an EDM wire cutter. This machine uses a brass wire of 0.25mm diameter with an electric charge passing through it to cut / burn away the unwanted material. It is quite surprising just how quick the wire can feed along. In this case 6.5mm / minute.





Greg also brought along a 3D printer he is building up from a Chinese supplier. It comes in kit form and has a dual headed extruder fitted so you can have it set up for two different materials or use a support material to help support your print. The kits are very basic and he has had a lot of problems with it trying to get it to print. The biggest problems have mostly been to do with the software and getting the computer to talk to the printer so a more friendly software could be used to run it.

Being so basic it can also do with some of the upgrades that others have designed and shared on the 3D printing groups on Facebook. These groups have proved to be very helpful and we are making progress in sorting the printer out. It has a capacity for printing of 220mm X 220mm X 230mm high. The printer will be used to print wax models (patterns) for lost wax castings of model train parts and jewellery.

Well that is a quick round up of the workshop night and as always it is a good time to ask all those questions about engineering or other ideas on how to do something that you would like help with. (Remember the un-asked question will not get answered)
So remember this meeting takes place at 7-30 on the second Tuesday of the month and all members are welcome to come along and join in. Cheers Greg B





'THE WAY WE WERE' LECTURES



'Transportation' is the theme of this year's Thames Heritage Festival

A series of lectures to be held at The Treasury, 705 Queen Street, Thames

\$5 per lecture or \$15 to attend all four

Transport on the gold fields presented by Kae Lewis
11 am Tuesday 12 March & 6.30 pm Wednesday 13 March

Getting to the gold field - the wharves of Thames and Tararu
presented by Dave Wilton
11 am Wednesday 13 March & 6.30 pm Tuesday 12 March

The Railways and Tramways of Thames presented by Dave Wilton
11 am Thursday 14 March & Friday 15 March 6.30 pm

A brief history of steam from the Greeks, through A&G Price, to steam punk presented by Evan Lewis
11 am Friday 15 March & 6.30 pm Thursday 14 March

Transportation Display

*Items from The Treasury
Collection*
Opening 11 March 2019

Gold coin donation

View during usual
opening times

MORE INFORMATION AVAILABLE AT

www.thetresury.org.nz Phone: 07 868 8827

www.thamesheritage.co.nz



SUPPORTED BY

