

Number 631

February
2018

The MICROMETER

AUCKLAND SOCIETY OF MODEL ENGINEERS INCORPORATED

PO Box 14570, Panmure, Auckland, 1741, NEW ZEALAND

Club House: Peterson Rd, Mt Wellington Auckland

Telephone: (9) 570 5286

Club Web Site: www.asme.org.nz

President	Timothy Robinson	09 296 2949
	e-mail address	president@asme.org.nz
Secretary	Mike Moore	09 443 6050
	e-mail address	info@asme.org.nz
Editor	John Lankow	09 576 5400
	e-mail address	editor@asme.org.nz

REGISTERED NEW ZEALAND PUBLICATION

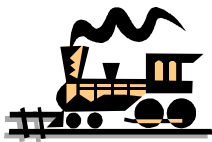
Important Announcement

The February General Meeting, which under normal circumstances would be held on Tuesday 6th February, has been postponed and will now be held on **Tuesday 13th February**.

This is of course because the 6th being Waitangi Day is a public holiday and some members are quite likely to have higher priorities on this day, such as spending the day at the beach, driving a loco at MLS for several hours, or even returning from a long weekend in the Bay of Islands!

So: **Next Meeting Tuesday 13th February at 7.30pm**

The February committee meeting will be held the following Tuesday (the 20th) as per usual.



Train Roster

	Date	Electric Driver	Electric Driver	Steam Driver	Train Controller	Station / Guard	Station / Guard	
	4-Feb-18	R Reichardt	A Shirley	Voluntary	<u>B Aickin</u>	P Tomkies*	S Shirley	
	11-Feb-18	P Woodford	I Ashley	Voluntary	<u>G Wills</u>		D Beecher	
	18-Feb-18	A Bailey	M Granger	Voluntary	<u>P Dowdeswell</u>	R Crook*	M Vickers	
	25-Feb-18	M Banks	G Beasley	Voluntary	<u>T Lawrence</u>	P Jones*	D Wilson	
	4-Mar-18	M Hollis	D Housley	Voluntary	<u>S Meikle</u>	M Luxton*	D Vaughn	
	11-Mar-18	J Lankow	D Moffat	Voluntary	<u>T Robinson</u>	B Matchett*	D Beecher	
(Start)	18-Mar-18	M Moore	P Moy	Voluntary	<u>G Anderson</u>	R Stratton*	R Souter	
11:00am	25-Mar-18	R Reichardt	A Shirley	Voluntary	<u>D Russell</u>	P Tomkies*	M Vickers	
1:00pm	25-Mar-18	P Woodford	I Ashley	Voluntary	<u>G Wills</u>	R Crook*	D Wilson	
Note: There is a double roster for the Panmure Basin Festival Day on the 25th March 11:00am to 2:00pm and 1:00pm to 4:00pm. (Overlap of 1 hour for lunch breaks)								

Bold and Underlined Name:

This is the designated **Train Controller**, i.e. the person in overall control of all operations for the day

Bold with Asterisked* Name:

This is the designated Stationmaster, i.e. the person responsible for activities in the station area. The Stationmaster is also responsible to account for the day's takings.

Drivers: Please keep your eyes open for unusual or suspicious behaviour around the track which may affect the safety and/or smooth operation of our trains. Report such activity to the Train Controller.

Please Note:

If for some reason you are unable to attend on your rostered date, you are respectfully reminded that it is **your** responsibility to find a replacement member to fill the gap – please don't let the rest of the team for the day be left short-handed.

Also, please ensure the member you arrange a swap with is one who is rostered to undertake the same role to ensure we always have members with the appropriate training and experience on the day.

FEBRUARY CALENDAR

Tuesday February 13th, 7.30pm - General Meeting, ASME clubrooms.

Tuesday February 20th, 7.30pm - Committee Meeting, ASME clubrooms

Coming up - Panmure Basin Fun Day, Sunday March 25th. We will be operating 2 rostered shifts on this day with hopefully 3 electric locos plus steam. We had 2 steamers and 2 electric locos running for the last PBSD, and they were kept busy the whole time. Extra volunteers will be required!

Committee Comments

Congratulations to long time ASME members, David Watt and Greg Burrows. With some 94 years membership of ASME between them, they were well placed to be recognised as leading model engineers – and indeed they were. At the MEANZ Biannual Convention held at Nelson during the second week of January, their exhibits were both hugely successful, gaining multiple awards each. David's latest 7.25"g NZR Wf loco won Most Popular 7.25"g Loco, Best Model at Convention and Best Steam Loco: while Greg's Foden steam lorry won Most Popular Road Vehicle and Best Road Vehicle. Well done lads, for a first class effort getting these models completed to such a high standard and in time for the Convention.

Congratulations are also due to Allan Bailey who completed his first loco which has passed its boiler test and is being operated on the Waipuna Miniature Railway (see picture in last month's Micrometer). While Allan is still getting a handle on maintaining steam with the new coals, hopefully he will be pulling passengers on Sundays before long. It's great to see another new loco completed at ASME and Allan has made a good job of the Polly V – it looks good and runs well.

New USA manufactured batteries have been acquired and will be fitted to the Dsc shortly. We will try the best of the displaced batteries (which are only 2 1/2 years old) in the Dsa – the motor is being checked out at present and the wheels have been regauged to 7.25"g, so will match the new trolleys perfectly. The plan is to have it running well before the next Panmure Basin Fun Day (Pbfd) which will be held on 25th March 2018.

Regarding the Pbfd, the General Manager will be rostering two crews on to cover the extended running hours on 25th March. However, we would appreciate any extra helpers for some or all of the day as this is traditionally our busiest running day of the year. Please diary this event now so you can be available to help out!

The AGM held in December saw essentially the same committee returned to manage the club affairs, so you must all be happy with our efforts. Subscriptions for 2017/18 were confirmed at the same rates as set in 2015 and confirmed also in 2016. Rebate and Subs notices were sent out on 11th & 12th December by email. If you haven't paid as yet, your attention to this without further delay would be much appreciated. If you are unsure, please contact the Treasurer – Grant Anderson (ph 5768330).

At the general meeting which followed the AGM, the members present unanimously approved naming the main wooden bridge as the "James Greasley Trestle Bridge" in recognition of Jim's immense contribution to the club. A suitable plaque is being designed and made by Dave Housley and is expected to be unveiled at a special event to be announced in the near future.

At the last committee meeting, Greville raised the possibility of obtaining some more club T-shirts (with ASME logo). He would like to hear from anyone who is interested in buying one (or more) before deciding whether or not to get more made.

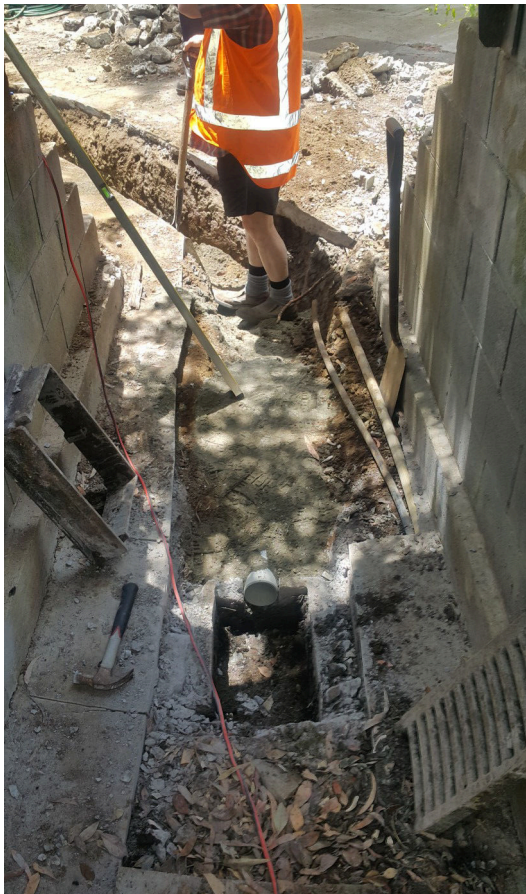
The following files are now available in the Members' section of the ASME website:

President AGM Report 2017 Final

Draft Minutes AGM December 2017v2

ASME Christmas Dinner

Several ASME members and spouses enjoyed a lovely Christmas Dinner at the Remuera Club on Friday night December 8th 2017. The picture below was taken by Timothy Robinson. See anyone there you recognise?



Working Bee December 27th 2017

The drain under the pedestrian underpass near Waipuna Station has been flooding a lot during recent heavy rains so a working bee was organised to get to the bottom of the problem.

On the left can be seen the drain itself - it was going to take a bit of fixing.

On the right, Tony Lawrence attacks the problem with a digger.

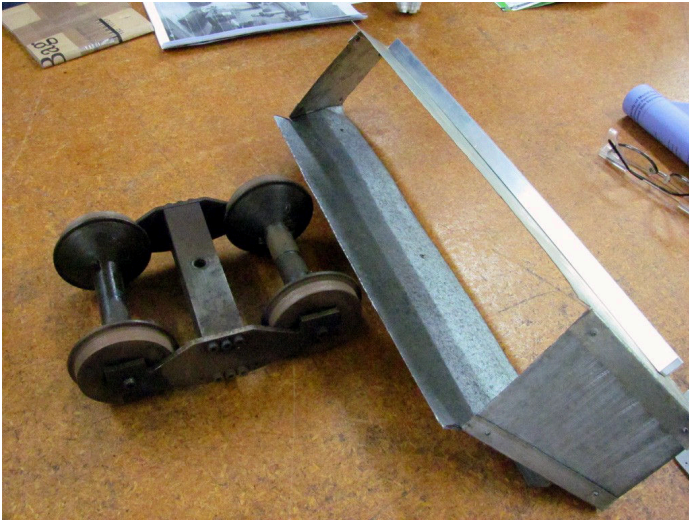
Others on hand to "supervise" and manage the odd shovel were Timothy Robinson, Mike Moore, Bob Aickin and John Lankow.

(Pictures taken by Timothy)



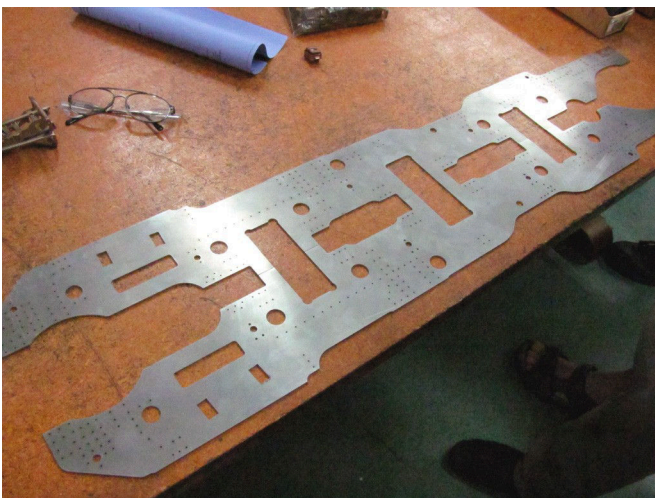
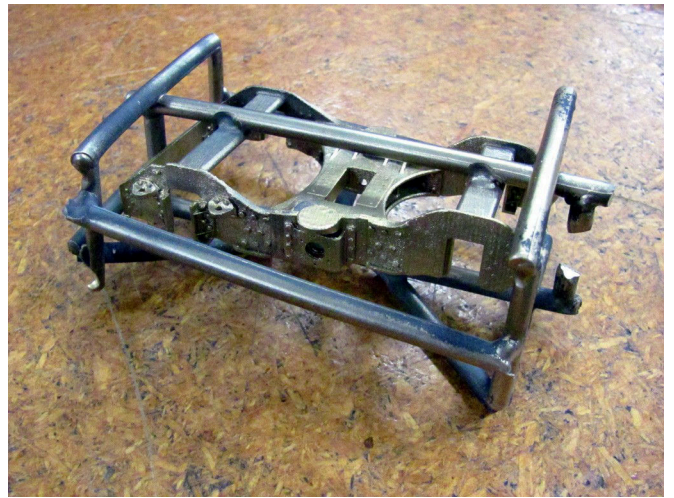
Bits and Pieces 5th December 2017

Report and Photos by Dave Russell



This odd shaped piece of sheet metal work is being made by **Greville Wills**. The item is the start of a chute being made for the club vacuum leaf sucker. The attachment should increase the efficiency of the unit.

Most of the items that **Mike Jack** produces are for 5" & 7-1/4" gauge engines: this next piece is a bogie frames assembly for an "O" gauge model King. The whole item was cast in bronze from a wax produced by Mike. The frames around the item are sprues to add strength and rigidity to the finished item while being handled and shipped. "O" gauge equates to approx. 7mm to the foot.



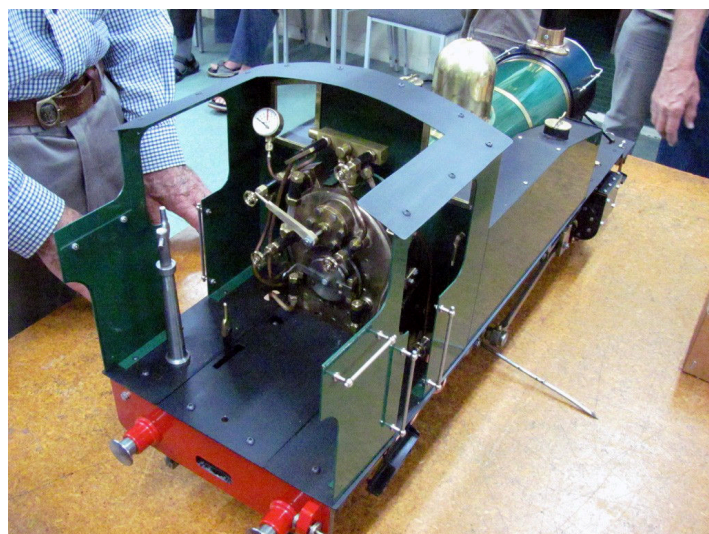
These locomotive main frames have been laser cut from 2.5mm steel. They are the first pair for Mike Jack's 5" gauge production of BR Standard 2-6-2 3MT tank locomotives. As per Mike's usual standards the frames were finished to a very high quality.

Mike also brought in the mould and samples of some shock absorber rubbers suitable for many BR locomotive types in 5" gauge.





This next item was a bit of a "What is it?" from **Mike Banks**. Turned out to be a roll of aircraft black box data recording material. Made from stainless and being only 0.001" thick Mike was offering free to members a piece that could be cut from the roll. The etched recording can be seen on the roll.



Allan Bailey has been constructing this Polly model from kitset parts sent in monthly instalments over about the last year. It is great to see this loco finished and to a high standard. (*Allan was pictured with his new loco on our track in the December Micrometer - Ed*)

Lastly tonight was a box full of relays from **Greg Burrows'** workshop. Greg has made this item so that he can remotely operate a small electric winch for loading and unloading his large Foden steam truck into and out of the back of his van. Greg is heading to Nelson for the convention with the truck.



Steam and Cinders Convention – Nelson

Courtesy of Lachlan Clark (Editor of the OMES magazine "CONROD")

Seven hundred kilometers is a long way to go to play trains but that is exactly what a dozen of our members did over the holiday season. 2018 was Nelson's turn to host the national model engineering convention and from the outset I will say they put on an excellent event. The event is held every second year in early January and alternates between the North and South Island. The Nelson club is ideally suited to hosting such an event with an extensive ground level track, a challenging and lengthy raised track, a massive boat pond, and heaps of room for traction engines and steam trucks to run around in the adjacent sport grounds.

In all, the event had over 300 registered attendees, around 80 locomotives, and half a dozen steam road vehicles. Locomotives ranged in size from a 2.5" gauge AB built by Ken McIntyre and presented by Reece Cobb (Nelson) to several one tonne plus 7.25" gauge locomotives from the North Island.

OMES was well represented with seven locomotives present. First on the track from OMES was Andrew with Simplex. The smaller shunting locos seemingly well suited to the steep gradients and tight corners of the raised track. The grand parade saw Chris with BeJax, Graeme with Simplex, and Andrew with Simplex take to the track. Lachlan, with Russell's Butch, followed later in the afternoon and was one of the only 7.25" gauge steam locos to attack the raised track.

The ground level track experienced an even greater demand. It was great to see Allan Stevens back on the track, manning the regulator on brother Robyn's Atlantic. Jim managed to get in some practice ahead of finishing his WW, driving Dave Watt's exceptional 7.25" WF. The back-head on this loco needs to be seen to be believed, a true credit to Dave. Pulling two trolleys, the loco gave the impression of hardly working, effortlessly pulling the load up the grades at the top end of the 900m ground level track.

I don't know what it is about Traction Engine modellers but all models which were on show were exquisitely maintained machines. Allan Familton (Christchurch) was present with his full size steam truck. This was the cause of much interest when it was taken cruising on the main streets of Nelson, as was the sight of a traction engine going through the drive through at KFC and McDonalds. Traction engines of all sizes were present. Catching my eye was a compound engine, currently being restored. Fantastic machining topped by a flawless paint job. One engine which had me confused was a Fowler which emitted no smoke or steam. I was later to find out it was electrically driven. A number of steam trucks were also on show. Built from modified kits these were impeccably presented.

The display inside the clubrooms further showcased the breadth of the hobby with scale railway displays, model aero engines, and other miscellaneous models on show.

Gary and Bruce both had models running on the pond as did Reece (Nelson) who demonstrated his recently refurbished steam boat. There were a couple of boats on the pond when we arrived on the first day. This had Gary looking for the operators to find out which frequency they were on. As it turns out they were just moving in the breeze on some fishing line attached to a brick at the bottom of the pond.

The Nelson pond is filled by the king tide and in recent years has suffered from an extensive build up of weed and sludge. Work to rectify the situation permanently was costed in excess of \$1 million. A temporary fix was put in place for the convention and finished only a few weeks before the event. A huge effort to get it ready. The king tides during the event kept the pond full to overflowing during the weekend.

Being salt water the aquatic life is notable. The Les Moore challenge this year was to build a putt-putt boat out of a tin can. A friendly eel made an appearance during the competition, assisting by pushing one of the boats along. The fish in the pond could also be seen trying to jump the dam each high tide.

Events held in the evening kept many entertained. A shunting competition in the wet resulted in much wheel slip and was a good trial for the strength of the trolley couplings. A night run was formally cancelled due to heavy rain, however a determined few still ventured out on the track.

The meals were well catered for in a large marquee, the biggest being the awards night on Sunday. Dave Watt took out the Best Model on Show, People's Choice 7.25" Gauge Loco, and the Best Steam Loco with his WF. Greg Burrows was awarded Best Road Vehicle and People's Choice Road Vehicle for his Foden steam truck.

The Nelson membership led by the Gibbs family did an exceptional job in preparing the facility and running the event. It is easy to under-appreciate the effort required to put on such a show and cater for everyone's needs. For that we are very grateful to the Nelson club. An excellent show which exemplified what the hobby of model engineering is all about.

Many thanks to Lachlan from Dunedin for his excellent report - Grant Anderson was going to write something, but couldn't improve on Lachlan's fine article above! But he has sent in a few photos of the event (with credits shown) as follows:



Two Foden steam lorries lined up and ready to go - Greg Burrows' prize-winner is on the left.

Photo: Aaron Pilkington

ASME's senior life member Peter Anderson (longtime Editor at HVMES) has a spin on the raised track.

Photo: Heather Wilson



Line up of road machines on display. *Photo: Heather Wilson*

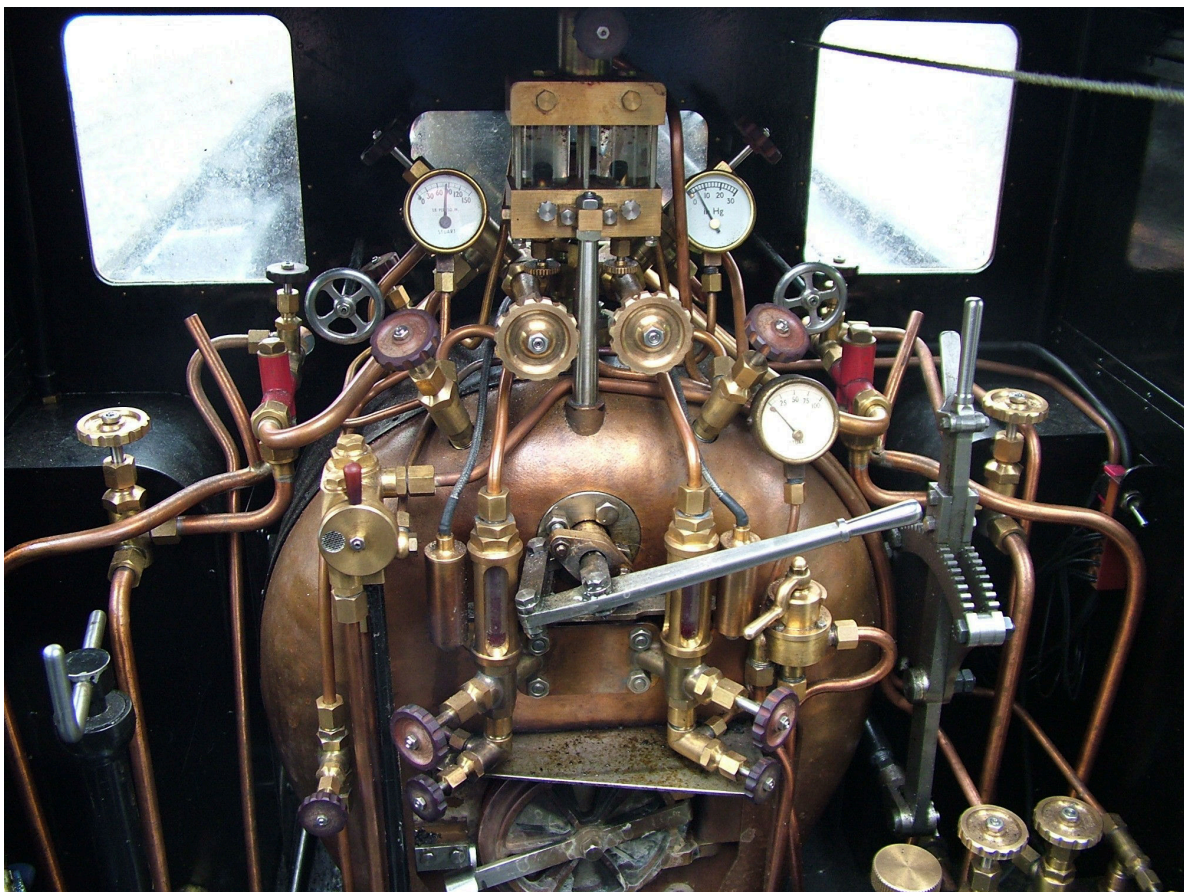


Ian McKay drives the massive Rio Grande narrow gauge K-36 loco of Ian Welch of Mainline Steam fame- this loco pulled some 17 passenger cars loaded with passengers at the convention.

Photo: Jack Still



Nice to see a large 3.5" g loco running (*Hear, Hear!- Ed*). Ian Hayton from NPSMEE running his Les Fitt (ex ASME) built NZR Kb loco. Photo: Lachlan Clark



Super cab detail of Dave Watt's latest Wf loco.

Photo: Grant Anderson



Don Moffat gets a ride around behind his C class loco driven by Lindsay Challis.

Photo: Lachlan Clark

Interesting operational display of David Turner's saw-mill powered by a beautiful traction engine!

Photo: Heather Wilson

Many more photos and videos are available on social media – especially NZ Model Engineers Facebook site.



PANMURE BASIN

FUN DAY



FREE

FAMILY ACTIVITIES
AND CHALLENGES

AROUND THE
PANMURE BASIN
SUNDAY, MARCH 25TH 2018

11AM - 4PM

THANKS to:



Maungakiekie-Tāmaki
Local Board
Auckland Council



Fresh Concept.