

Number 628

October
2017

The MICROMETER

AUCKLAND SOCIETY OF MODEL ENGINEERS INCORPORATED

PO Box 14570, Panmure, Auckland, 1741, NEW ZEALAND

Club House: Peterson Rd, Mt Wellington Auckland

Telephone: (9) 570 5286

Club Web Site: www.asme.org.nz

President	Timothy Robinson	09 296 2949
	e-mail address	president@asme.org.nz
Secretary	Mike Moore	09 443 6050
	e-mail address	info@asme.org.nz
Editor	John Lankow	09 576 5400
	e-mail address	editor@asme.org.nz

REGISTERED NEW ZEALAND PUBLICATION

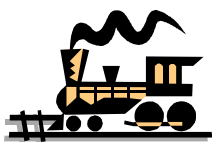
Signals

Everything you wanted to know about railway signalling, especially the traditional semaphore kind, can be found at this website:
<https://signalbox.org>

This info found in Geoff Theasby's "Club News" column in *Model Engineer* 4564, 7th July 2017.

Picture by GVR.





Train Roster

Date	Electric Driver	Electric Driver	Steam Driver	Train Controller	Station / Guard	Station / Guard	Station / Guard
1-Oct-17	M Granger	M Hollis	Voluntary	<u>G Anderson</u>	B Cooper*	R Copeland	
8-Oct-17	D Housley	M Plant	Voluntary	<u>B Aickin</u>	R Crook*	P Jones	
15-Oct-17	J Lankow	D Moffat	Voluntary	<u>P Dowdeswell</u>	M Luxton*	B Matchett	
22-Oct-17	M Moore	P Moy	Voluntary	<u>S Meikle</u>	J Service*	D Beecher	
29-Oct-17	R Reichardt	P Woodford	Voluntary	<u>T Lawrence</u>	R Stratton*	M Vickers	
5-Nov-17	I Ashley	A Bailey	Voluntary	<u>T Robinson</u>	B Matchett*	D Beecher	
12-Nov-17	G Beazley	M Granger	Voluntary	<u>D Russell</u>	K Ryan*	A Shirley	
19-Nov-17	M Hollis	D Housley	Voluntary	<u>G Wills</u>	R Stratton*	P Tomkies	
26-Nov-17	J Lankow	D Moffat	Voluntary	<u>G Anderson</u>	D Wilson*	M Vickers	
Please note one change in October due to Hospital Procedure							

Bold and Underlined Name:

This is the designated **Train Controller**, i.e. the person in overall control of all operations for the day

Bold with Asterisk* Name:

This is the designated Stationmaster, i.e. the person responsible for activities in the station area. The Stationmaster is also responsible to account for the day's takings.

Drivers: Please keep your eyes open for unusual or suspicious behaviour around the track which may affect the safety and/or smooth operation of our trains. Report such activity to the Train Controller.

Please Note:

If for some reason you are unable to attend on your rostered date, you are respectfully reminded that it is **your** responsibility to find a replacement member to fill the gap – please don't let the rest of the team for the day be left short-handed.

Also, please ensure the member you arrange a swap with is one who is rostered to undertake the same role to ensure we always have members with the appropriate training and experience on the day.

OCTOBER CALENDAR

Tuesday October 3rd, 7.30pm - General Meeting , ASME clubrooms.

The annual ASME club auction. Bring your unwanted stuff to sell. There will be more items from Jim Greasley's workshop also.

Tuesday October 17th, 7.30pm - Committee Meeting.

Coming up:

Tuesday December 5th - ASME Annual General Meeting including election of officers etc.

Friday December 8th - ASME Christmas dinner at Remuera Club. Mark this date on your calendar/diary now (if you haven't already)! Cost: \$25 per head. (Purchase your own alcohol from the bar).

President's Report

At the Special General Meeting on the 5th September, the following motion was put to the members:

“That in accordance with Rule 12.5, this meeting endorses the Committee's recommendation to pursue the purchase of the Waipuna Water Ski Club rooms and enter into a Community Lease (License to Occupy) with Auckland Council on as favourable terms, acceptable to the Committee, as can be negotiated”

After some discussion, the motion was put to the vote. A majority of the members present voted against the motion.

The DSC loco is now regularly doing three hours running on Sundays with two riding trolleys. This is in addition to the normal EC loco running (with its new batteries) with three trolleys. Unfortunately, bad weather on at least two Sundays recently resulted in a lack of passengers and/or an early finish to the afternoon running.

Timothy Robinson
President ASME

Notice of Annual General Meeting of Auckland Society of Model Engineers Incorporated

The Committee gives notice that the next Annual General Meeting will be held at the ASME Clubrooms, Peterson Reserve, Panmure on Tuesday 5th December 2017 commencing at 7.35pm.

The Agenda items will be the relevant items as set out in Rule 16.

New committee members are required. If you think you are committee material, don't be backward in coming forward!

Also, if you are currently holding a club trophy, please return it to the secretary asap.

ASME Christmas Dinner

As advertised in the September Micrometer, the ASME Christmas Dinner will be held this year at the Remuera Club, Ohinerau St, Remuera on Friday night 3rd December. The cost to members and partners (subsidised by ASME) is \$25 per head (incl GST but not alcohol).

The Committee need to confirm numbers attending and also collect your payment as soon as possible.

Payment can be direct credited to ASME's bank account : 02-0223-0078104-00.

Please put your name and "Xmasdinner" or similar comment in the Reference fields.

Please also advise the club Secretary by email (or otherwise) of numbers attending.

Bits and Pieces 5th September 2017

Conducted by Mike Banks, report and photos by Dave Russell.



First up tonight were some abrasive discs selling on special. See **Mike Moore's For Sale** ad, elsewhere in this newsletter.

The second item was also one of Mike Moore's and was a "what is it". It was obviously made by Desoutter but nobody could pin a specific job to the item. I had a quick Google while writing this and came up with a photo of an aircraft air drill with this piece attached for sale on eBay: US\$1200.

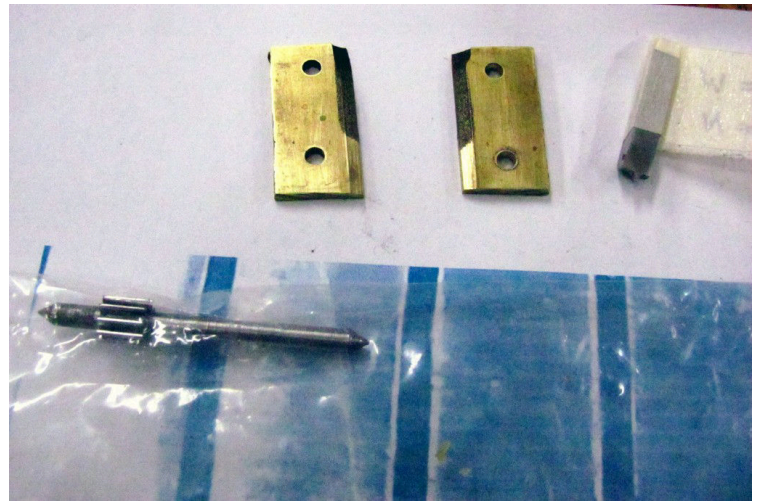
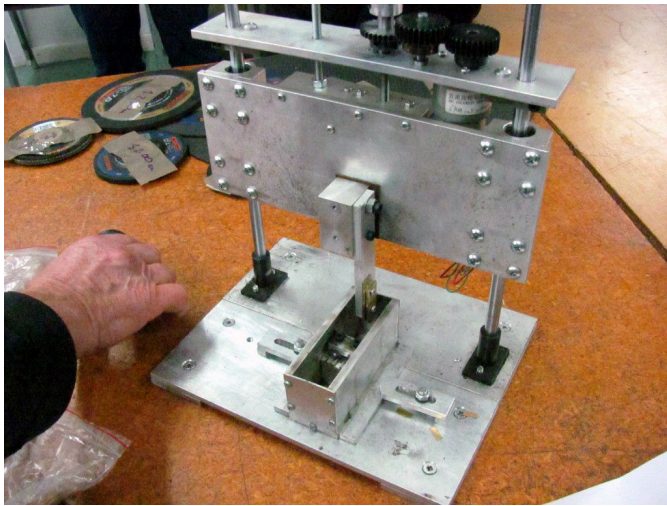
<http://www.ebay.com/itm/371661645235?rmvSB=true>



Tony Lawrence has been busy putting tyres on some wheels for his under-construction Phantom 7-1/4" locomotive. Now he is ready to quarter them using the jig shown in the photo.

What seemed like a straightforward job turned into a mission for Tony when he was making this depth stop for the spindle on his lathe. Everything went fine until the final fitting when he discovered a casting lump inside the lathe spindle. There was some useful advice from the floor on how to overcome the problem.





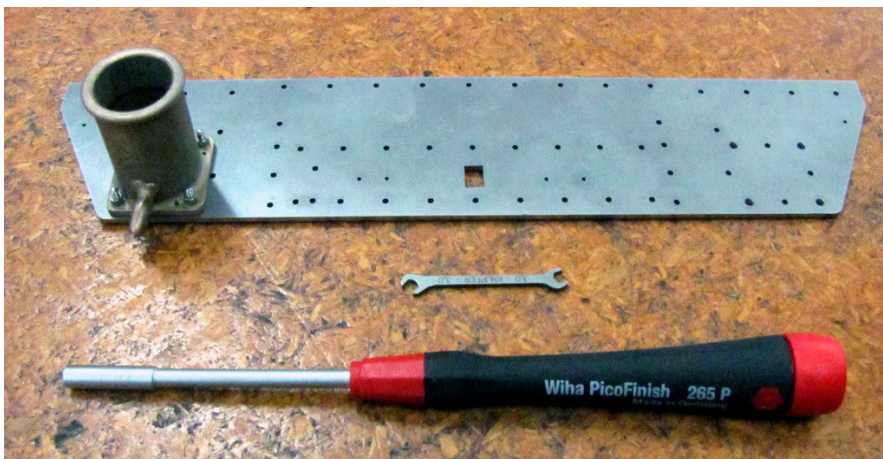
David Wilson built this spark eroder to form the cutting tool to make a pinion for a clock that he is working on. The second photo shows the eroding form plates, the finished tool and the finished pinion.



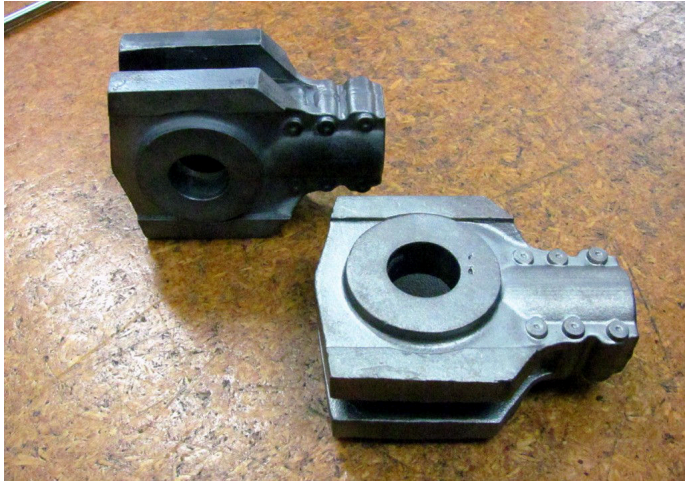
Peter Woodford had brought in this very nice set of Helicoil thread repair inserts, taps and fitting handles. Peter explained how they are much better than some of the similar systems available.



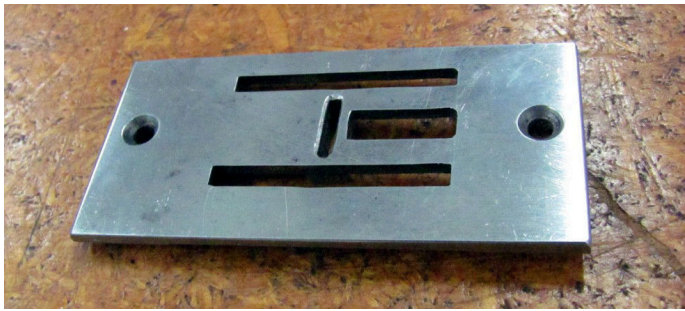
Mike Jack brought in a lathe tailstock die holder. He was loaning it to Michael Cryns to help with aligning his lathe head stock. Because the centre arbor was precision ground it would do the same job as a test bar with the taper fitting direct in the lathe spindle.



Also from Mike Jack was a buffer beam and buffer stock for his production loco, with scale nuts, bolts and spanner ex Germany.
<https://knupfer.info/shop/index.php/deutsch/>



Mike's third contribution tonight was straight from the foundry in the way of two crossheads for a Sth. African Railways model in 7-1/4 gauge. They had been cast to some waxes provided by the customer.



This commercial sewing machine guide plate has been made by **Ron Copeland** from Gauge plate. Ron was asking what would be the best way to harden it as it will often take a hit from a heavy needle. Those that know said Nitriding would be the best option.



Ron has also been helping his son install a new engine in his yacht: this required removing the prop shaft and housing from the hull. Ron has a way of doing this using specially made hole saw bits with tungsten cutting edges guided up the original bored hole.



Greg Burrows "Truck Shop" this month produced some nameplates for his Foden steam truck. Greg had let his wife choose the nick-names. The alloy one is CNC milled and the bronze ones are cast using Mike Jack to produce some wax patterns.



Lastly **Mike Banks** came to his own piece, tonight in the form of his GWR top feed and safety valve assembly for the "King", Mike has had some trouble with the valves not seating properly, so he has investigated some old ME magazines and is trying putting in stainless seats and spindles.



For Sale

Cutting and Grinding Discs- Rhodius, made in Germany (as displayed at the last General Meeting)

Cutting Discs:

350 x 25.4 x 3.0 \$5.00ea or 10 for \$40.00(steel)

350 x 25.4 x 2.5 \$5.00ea or 10 for \$40.00 (steel)

230 x 22.23 x 3.0 \$2.50ea (Steel)

115 x 22.3 x 1.0 \$1.50ea (Steel/stainless)

Grinding Discs:

180 x 22.23 x 7 \$2.50ea (steel/stainless)

115 x 22.23 x 7 \$2.00ea (steel)

115 x 22.23 Sanding Discs 120 grit (steel/stainless) \$2.50ea

Other sizes and types may be available, to order or for queries contact Mike Moore;

Mike.moore01@clear.net.nz

09 443 6050

021 174 8501

More Info

Following on from a discussion at the September General Meeting, Ron Copeland advises that the name of the metals company that sells copper tube is Kormax 0800 789 987, sales @ kormax.co.nz , 20 Kaimanawa St Palmerston North.