

Number 616

September  
2016

# The MICROMETER

AUCKLAND SOCIETY OF MODEL ENGINEERS INCORPORATED

PO Box 14570, Panmure, Auckland, 1741, NEW ZEALAND

Club House: Peterson Rd, Mt Wellington Auckland

Telephone: (9) 570 5286

Club Web Site: [www.asme.org.nz](http://www.asme.org.nz)

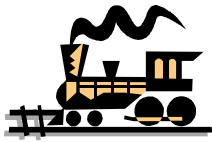
<b>President</b>	David Black	09 235 2372
	e-mail address	<a href="mailto:president@asme.org.nz">president@asme.org.nz</a>
<b>Secretary</b>	Mike Moore	09 443 6050
	e-mail address	<a href="mailto:info@asme.org.nz">info@asme.org.nz</a>
<b>Editor</b>	John Lankow	09 576 5400
	e-mail address	<a href="mailto:editor@asme.org.nz">editor@asme.org.nz</a>

REGISTERED NEW ZEALAND PUBLICATION

## What is it?

A complicated casting and a work in progress. Keep an eye on the Bits and Pieces section in a future issue.





# Train Roster

Date	Electric Driver	Electric Driver	Steam Driver	Train Controller	Station / Guard	Station / Guard	Station / Guard
4-Sep-16	M Moore	P Moy	Voluntary	<u>G Wills</u>	K Ryan*	A Shirley	Voluntary
11-Sep-16	M Plant	R Reichardt	Voluntary	<u>D Black</u>	A Stratton	<b>P Tomkies*</b>	Voluntary
18-Sep-16	P Woodford	B Aickin	Voluntary	<u>T Lawrence</u>	R Stratton*	R Copeland	Voluntary
25-Sep-16	I Ashley	A Bailey	Voluntary	<u>S Meikle</u>	R Crook*	G Healy	Voluntary
2-Oct-16	P Dowdeswell	M Granger	Voluntary	<u>T Robinson</u>	P Jones	<b>M Luxton*</b>	Voluntary
9-Oct-16	M Hollis	D Housley	Voluntary	<u>G Anderson</u>	<b>B Matchett*</b>	G Murray	Voluntary
16-Oct-16	J Lankow	D Moffat	Voluntary	<u>D Russell</u>	K Ryan*	A Shirley	Voluntary
23-Oct-16	M Moore	M Plant	Voluntary	<u>T Lawrence</u>	<b>M Richardson*</b>	J Service	Voluntary
30-Oct-16	P Moy	G Beazley	Voluntary	<u>G Wills</u>	R Stratton	<b>P Tomkies*</b>	Voluntary

**Bold and Underlined** Name:

This is the designated **Train Controller**, i.e. the person in overall control of all operations for the day

**Bold with Asterisked\*** Name:

This is the designated Stationmaster, i.e. the person responsible for activities in the station area. The Stationmaster is also responsible to account for the day's takings.

**Drivers:** Please keep your eyes open for unusual or suspicious behaviour around the track which may affect the safety and/or smooth operation of our trains. Report such activity to the Train Controller.

**Please Note:**

If for some reason you are unable to attend on your rostered date, you are respectfully reminded that it is **your** responsibility to find a replacement member to fill the gap – please don't let the rest of the team for the day be left short-handed.

Also, please ensure the member you arrange a swap with is one who is rostered to undertake the same role to ensure we always have members with the appropriate training and experience on the day.

## **Update on fundraising subsidy scheme**

As of the 16 August the number of rebates earned will total 28.

There could be another 2 members who may get a rebate.

It is possible that a further 7 members may receive a partial rebate.

There are 3 members on the roster who are unlikely to achieve the desired minimum number of duties, and will therefore be ineligible for any rebate.

Bob Aickin.

## **SEPTEMBER CALENDAR**

**Tuesday September 6th, 7.30pm** - General Meeting , ASME clubrooms. Bring along your workshop "failures" (to use a polite term!) as well as your successes for the Bits and Pieces table.

**Tuesday September 20th, 7.30pm** - Committee Meeting.

# September Report

David Black has been away for the past month. During this time, Vice-President Greville has ably filled in, chairing the August General and Committee meetings.

Mark Richardson's talk on tools used in the manufacture and repair of watches and clocks in the early years was well received by the 30 plus people present at the August meeting. The examples he brought along looked quite unusual and very strange to those of us inexperienced in such things – one could never have guessed what they were for! However Mark explained things well which made it all understandable in the end. Michael Cryns followed by giving the meeting a brief heads-up on his talk planned for the November meeting which sounds like it will cover "the history & purpose of timekeeping & clocks" (my words). This promises to be another meeting to look forward to.

The September meeting will be an opportunity for members to bring along something they have made which did not quite turn out as they had expected or planned – referred to as a "cock-up" night. We haven't had one of these nights for many years, so please bring along any items you have – don't be embarrassed or too proud to share; this is intended to be a light hearted session that we can all learn from in a fun way. We will still have our regular 'bits & pieces' session so you can also bring along something engineering-wise that you have been working on recently that has turned out OK!

The Club has suffered some minor vandalism around the club premises and grounds over recent months, most of which has now been repaired by the Saturday Club. The list includes the ladies toilet door kicked in, downpipes smashed at the clubhouse and engine shed, graffiti on clubhouse and station walls and clearlite roof panels smashed on the engine shed shelter. Of course undertaking the repairs detracts from progress on works intended to improve the clubs facilities, so is most frustrating.

Recent work on the Track & Trolley Project has focussed on improving the access for locos and trolleys from the car park to the steaming bays. This area has always been a bit tight, so a wider deeper, access under the main pedestrian bridge with a concrete path has been completed. At present the boxing for the abutments, retaining wall and steps is almost complete and should be poured in September. The additional steps will help make entry easier for members & visitors and the underpass will allow for trolleys to enter the track directly from the car park.

Several members have now expressed an interest in acquiring one of the old raised level trolleys, so if you want one please advise the Secretary in the next two weeks, as any then remaining will be offered to other clubs. Maybe they can form a good basis for conversion to a lighter 7.25g ground level trolley for use with smaller locos? Sale of the old trolleys will help free up some much needed space in the engine shed.

Grant Anderson

29 August 2016

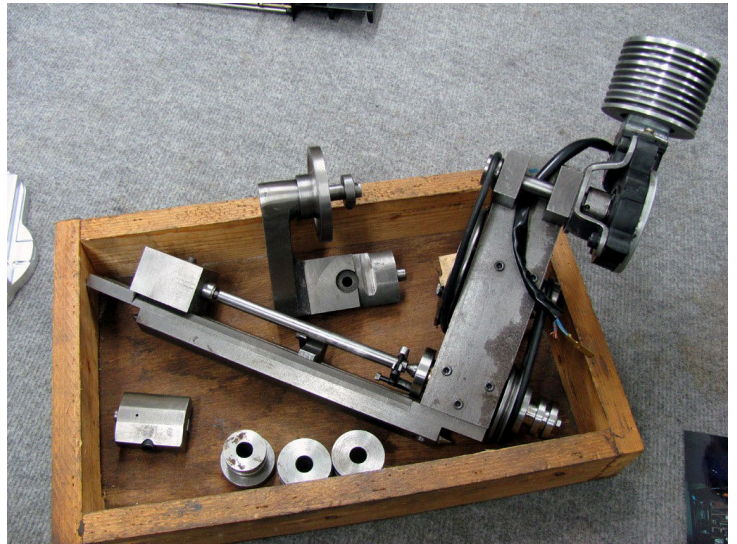
*Ed's note: Looking further ahead: the October meeting will, as usual, feature the annual ASME auction, so start looking around your workshop for things you no longer need (including unwanted stuff you bought last year!) and bring it along on October 4th to help contribute to the usual fun and games. Don't forget to bring your cheque book — you might find something to buy, and 20% of the takings goes into the club funds!*



## **Bits and Pieces August 2nd 2016**

Conducted by Mike Banks, with photos and report by Dave Russell.

This first item was a bit of a what is it? turned out to be Alan Foster's rocking cam grinding attachment that he made so that he could grind the cams for his model engines.



Greg Burrows brought in this pattern for a smoke box saddle for his steam truck: its made from high density polystyrene.

On the same large scale theme, visitor Bill Parker has made this cab plate with lubricators for his Foster Traction Engine.

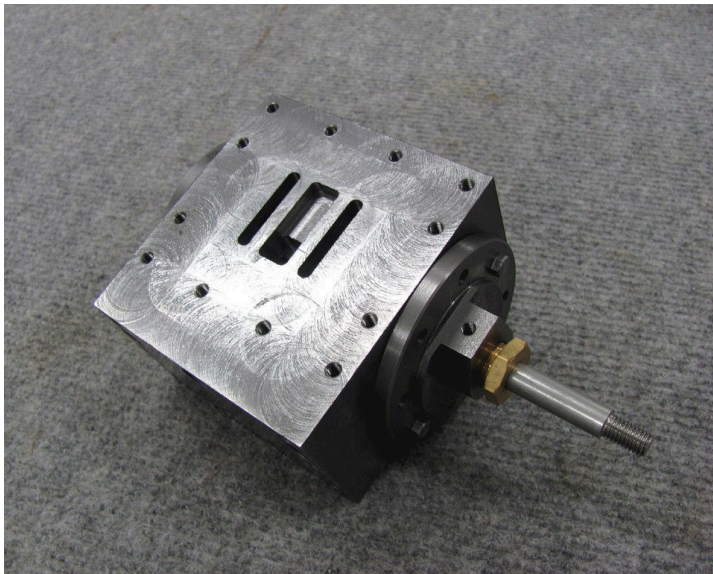






This Jacobs chuck has been modified by Peter Woodford so that it rotates on its spindle, good for holding items at the tailstock of the lathe instead of using a live centre.

Mike Jack has CNC machined up this new pattern for his small machine vices that he makes, he is going to make ten of these and get them cast ten at a time on one pattern board.



This is a cylinder as it arrived from the UK as part of the latest kit for the Polly Locomotive being built by Alan Bailey.

Murray Grainger brought along this hand pump built for pressure testing model boilers.

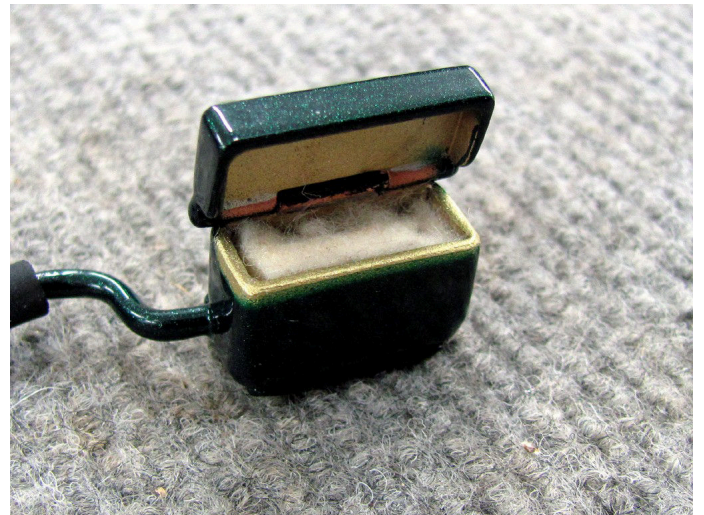






These studs if you look closely are RH thread on one end and LH on the other, Mike Moore explained how they were back to front due to a CNC programing error — only 200 for the bin!

Mike Banks is nearing completion of his fine scale 5" GWR King locomotive. These little lubricating boxes are connected to the axle boxes with nitrile tubing obtained from a model shop (fuel tube for aero engines).



Mike has also made these displacement lubricators as a back-up for the mechanical ones on the King.

Mike again — this air brush has a problem and it keeps pressurising the bottle instead of spraying paint. Some advice was given on this and an offer to compare with another similar item.



## **FOR SALE**

### **ASME Polo & T Shirts with club logo – for sale**

There are a small number of items in stock:

Dress Shirt	– Light Blue	1 x Large
Polo Shirts	– Dark Blue	3 x Small
Polo Shirts	-- Grey	1 x Small
T Shirts	- Off White	4 x Large
T Shirts	- Off White	1 x Small

If we do not have your size and you want to purchase an item, please let Greville know – if there is enough interest we may order more.

## **FOR SALE**

The committee have decided that it is time we thought about disposing of the surplus (raised track) passenger trolleys which are taking up valuable space in the engine shed.

Expressions of interest are invited for the purchase of one or more of these trolleys.

Contact the Secretary as per Grant's item on page 4.

Note that any trolley which is intended to be run on the ground level track will also need to be converted to 7¼" gauge if it is going to be used to carry the public.

## **WANTED TO BUY**

From: Peter Priest [<mailto:ppriest@clear.net.nz>]

Sent: Wednesday, 10 August 2016 10:58 a.m.

Subject: Lathe and accessories

Hi Guys,

I am about to retire in a years time and would like to take up a hobby in model engineering. To do this I need to buy some equipment for my workshop. I have been following your newsletter, hoping to see if any members are selling off any machining equipment. I am after a lathe at this stage, about a max of 1m between centres or smaller, single or 3 phase, and I am also interested in any tooling and stock to go with a lathe or milling machine.

I am a fitter and turner by trade but haven't worked at the trade for some years. If you have any members who wish to sell their workshop equipment I would be more than interested in buying this equipment. I am working out of Australia for the time being but coming back to NZ once a month, but can be contacted from this email address.

Thanks and regards,  
Peter Priest

## **HELP WANTED**

The committee is looking for a suitably qualified person to look after the ASME website. This will initially involve fixing the bits of it that currently don't work, and then maintaining the website on an ongoing basis.

Anyone interested can find out more from Timothy Robinson (who knows the technical stuff), or contact David or Greville for more information.



## **FOR SALE**

**Contact Dave Hamp phone (09) 8285626**

### **Brass and Copper Tube.**

- (1) Copper Tube:  
6" ID x 1/8 X 12 1/4" long. Weight 9.6 lbs
- (2) Copper tube:  
4 3/4" OD x 3/16 x 24 3/8" long. Weight 15.4 lbs
- (3) Brass shell casing:  
6" OD x 1/8 x 18" to start of taper. 2 shell casing taper ends 5 1/2 ID. Weight 12.4 lbs

### **Drip feed oiler**

Made by Jasper India. 1/8"BSF 40 thread. New.

### **Sentinel Locomotive.**

Constructed by Jim Gresley, known as Smelly Nelly. It is a 5" gauge 0 4 0 locomotive

Some parts required to complete are available as shown in photos. To operate needs a stationary engine, thought to be a double 10.

Boiler made by a consortium of Jim Gresley, Dave Watts and Alex Holmes to a test boiler design by LBSC. Boiler has ASME Boiler certificate No 3 but safety valve requires attention as maximum pressure at present only 80psi and designed working pressure is 100psi. Poppet valve throttle to Austin Walton design, Stainless steel grate and ash pan, 100% easy flow.



Reasonable offers accepted. Phone Dave Hamp 8285626 or leave a mesage on 0272880045.



## WORK AVAILABLE

*The following email was received by our President and may be of interest:*

Hi David,

I have a small turning job to do for a prototype and I thought the best option might be to find someone local who owns a small metal lathe.

I then thought the best person for such a task might be a model engineer...

The custom shoulder screws parts are for an experimental switching extruder for my 3D printer.

Someone in Mt Albert would certainly be handy but I am open to any offers and I am more than happy to pay for time and materials.

I have attached a short video (*still pictures in this ad*) of the extruder for your interest.

I look forward to your positive feedback on my inquiry. Kind regards

Peter Stoneham

### **VIRTUALIGHT Ltd.**

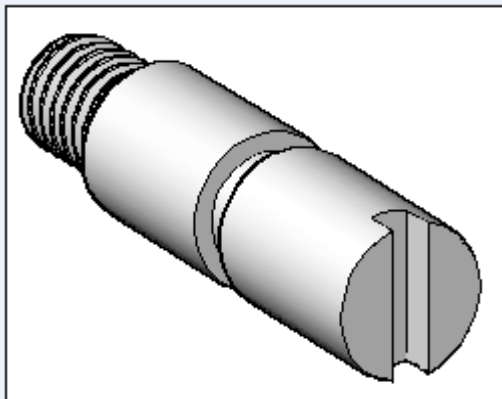
20 Mt. Royal Ave., Mt Albert, Auckland, 1025

Ph +64 9 815 7074

Mob +64 21 764 680

[www.virtualight.co.nz](http://www.virtualight.co.nz)

Shoulder screw;



The tilting extruder;

